



Activity ID	Activity Name	Remaining Dur	Early Start	Early Finish	2017				2018	
					Oct	Nov	Dec	Jan		
HK/2012/08 Revised Works Programme Rev.11.1(DD 30 Jun 2017)										
Dredging and Reclamation										
Marine Work Construction										
Zone D										
Seawall Construction - Zone D										
Seawall 10 & 11										
MAR20630	Zone D - Seawall 10 & 11: Install remaining seawall block	15	14-Oct-17	28-Oct-17						
MAR20650	Zone D - Seawall 10 & 11: Backfill Type A	16	29-Oct-17	13-Nov-17						
MAR20670	Zone D - Seawall 10 & 11: Lay geotextile and filter	19	14-Nov-17	02-Dec-17						
Works for Section Completion										
Construction										
CWB Tunnel & Slip Road Structures and Facilities										
CWB D - Slip Road 1 - Trough / Retaining Wall										
CWB D - Slip Road 1 - Trough/Retaining Wall Structure										
SIIA13742	Sec II A - CWB SR1 Trough & RW: Trough Structure bay 1a & 1b: Construct box-out area & backfilling	25	07-Oct-17	31-Oct-17						
Section III A - Road A2, A4 & A5										
Roadwork & Utilities - Section 1 (L1806 - L1801)										
SIIA10301	Sec III A - roadwork and utilities section 1 carriageway - Drainage works (L1806 -L1801)	20	01-Nov-17	23-Nov-17						
SIIA10300	Sec III A - roadwork and utilities section 1 carriageway - Drainage works (L2202-L2201)	21	03-Oct-17	26-Oct-17						
SIIA10340	Sec III A - roadwork and utilities section 1 carriageway - utilities: HEC along carriageway	21	23-Dec-17	19-Jan-18						
SIIA10302	Sec III A - roadwork and utilities section 1 carriageway - gully pipe	18	24-Nov-17	14-Dec-17						
SIIA10320	Sec III A - roadwork and utilities section 1 carriageway - watermain	7	15-Dec-17	22-Dec-17						
SIIA10290	Sec III A - roadwork and utilities section 1 carriageway - Implementation of TTA Stage 5	1	30-Sep-17	30-Sep-17						
Roadwork & Utilities - Section 2 (L1810 - L1806)										
SIIA12530	Sec III A - roadwork and utilities section 2 carriageway - watermain	10	14-Nov-17	24-Nov-17						
SIIA12550	Sec III A - roadwork and utilities section 2 carriageway - Utilities: HEC along carriageway & Crossroad duct (HEC & HGC)	28	25-Nov-17	29-Dec-17						
SIIA12510	Sec III A - roadwork and utilities section 2 carriageway - gully pipe (L1801 - L1806)	25	14-Oct-17	13-Nov-17						
Roadwork & Utilities - Section 3 (L1808 - L1102)										
SIIA12810	Sec III A - roadwork and utilities section 3 carriageway - black top	7	23-Dec-17	03-Jan-18						
SIIA12770	Sec III A - roadwork and utilities section 3 carriageway - utilities: HEC & crossroad duct (PCCW & HGC)	41	13-Oct-17	30-Nov-17						
SIIA12790	Sec III A - roadwork and utilities section 3 carriageway - road kerb & formation	19	01-Dec-17	22-Dec-17						
Roadwork & Utilities - Section 4 (L1406 - L1401)										
SIIA13010	Sec III A - roadwork and utilities section 4 carriageway - road formation: crossroad duct (HEC), road kerb & formation	24	20-Oct-17	17-Nov-17						
SIIA13030	Sec III A - roadwork and utilities section 4 carriageway - black top	7	18-Nov-17	25-Nov-17						
SIIA12990	Sec III A - roadwork and utilities section 4 carriageway - watermain	10	09-Oct-17	19-Oct-17						

Data Date:
30-Jun-17

- Current Milestone
- Actual Work
- Critical Remaining Work
- Remaining Work
- Remaining Level of Effort

3 Months Rolling Programme for Non-CR III Area (Oct 2017 - Dec 2017)
(Ref. to Works Programme Rev.11.1)

Date	Revision	Checked	Approved
03-Oct-17	11.1		



Activity ID	Activity Name	Remaining Dur	Early Start	Early Finish	2017			2018
					Oct	Nov	Dec	Jan
Roadwork & Utilities - Section 6 (L1102 - L1411)								
SIIIA13389	Sec III A - roadwork and utilities section 6 carriageway - Backfilling above tunnel roof slab	5	05-Oct-17	10-Oct-17	█			
SIIIA13399	Sec III A - roadwork and utilities section 6 carriageway - gully pipe (L1101 -L1102)	8	21-Oct-17	31-Oct-17		█		
SIIIA13470	Sec III A - roadwork and utilities section 6 carriageway - black top	7	22-Nov-17	29-Nov-17			█	
SIIIA13450	Sec III A - roadwork and utilities section 6 carriageway - road kerb & formation	18	01-Nov-17	21-Nov-17		█		
SIIIA13395	Sec III A - roadwork and utilities section 6 carriageway - Drainage works (L1101-L1102)	9	11-Oct-17	20-Oct-17	█			
Section V - Remaining At-Grade Road; Remove 2nd Stage ITA								
Roadwork & Utilities								
Section 1 (L1504 - L1900)								
SV12460	Sec V - Roadwork & Utilities Section 1 Carriageway - Utilities (TCS crossroad duct)	21	11-Oct-17	04-Nov-17	█			
SV12570	Sec V - Roadwork & Utilities Section 1 footpath - utilities:TCS	30	22-Nov-17	28-Dec-17			█	
SV12540	Sec V - Roadwork & Utilities Section 1 footpath - Watermain	14	06-Nov-17	21-Nov-17		█		
SV12580	Sec V - Roadwork & Utilities Section 1 footpath - paving block	30	29-Dec-17	02-Feb-18				█
SV12490	Sec V - Roadwork & Utilities Section 1 Carriageway - Road kerb & formation	24	06-Nov-17	02-Dec-17		█		
SV12520	Sec V - Roadwork & Utilities Section 1 Carriageway - Black top	20	04-Dec-17	28-Dec-17			█	
Section 2 (L1510 - L1504)								
SV12604	Sec V - Roadwork & Utilities Section 2 Carriageway : formation for access diversion	6	30-Sep-17	07-Oct-17	█			
SV12606	Sec V - Roadwork & Utilities Section 2 Carriageway: Divert access cross Zone B	0	09-Oct-17					
SV12630	Sec V - Roadwork & Utilities Section 2 Carriageway - Drainage Works L1406A - L1406B	21	15-Nov-17	08-Dec-17		█		
SV12690	Sec V - Roadwork & Utilities Section 2 footpath - Drainage Works (L2104 - L2105)	25	09-Dec-17	10-Jan-18			█	
SV12610	Sec V - Roadwork & Utilities Section 2 Carriageway - Drainage Works L1507-L1504)	31	09-Oct-17	14-Nov-17	█			
SV12665	Sec V - Roadwork & Utilities Section 2 Carriageway - Gully pipe (L1507-L1504, L1406A)	25	09-Dec-17	10-Jan-18			█	
Section 3 (Culvert L - L1510)								
SIV12844	Sec V - Roadwork & Utilities Section 3 footpath - U channel	21	15-Nov-17	08-Dec-17		█		
SIV12840	Sec V - Roadwork & Utilities footpath - Drainage works (Culvert L - L2105)	25	16-Oct-17	14-Nov-17	█			
SIV12860	Sec V - Roadwork & Utilities Section 3 footpath - Utilities: TCS, HGC, PCCW)	39	09-Dec-17	26-Jan-18			█	
SIV12820	Sec V - Roadwork & Utilities Section 3 Carriageway - Black top	20	19-Dec-17	13-Jan-18			█	
SIV12810	Sec V - Roadwork & Utilities Section 3 Carriageway - Gully pipe (Culvert L - L1611)	30	16-Oct-17	20-Nov-17	█			
SIV12850	Sec V - Roadwork & Utilities footpath - Watermain	21	15-Nov-17	08-Dec-17		█		
SIV12815	Sec V - Roadwork & Utilities Section 3 Carriageway - Road kerb & formation	24	21-Nov-17	18-Dec-17			█	
Section IV - Slip Road 3								
Roadwork & Utilities								
Section 1 (L16608 - L1601)								
SIV11762	Sec IV - Roadwork & Utilities at SR3 Section 1 Carriageway - Drainage Works (L2103-L2101)	21	03-Nov-17	27-Nov-17		█		
SIV11780	Sec IV - Roadwork & Utilities at SR3 Section 1 Carriageway - Watermain	18	29-Dec-17	19-Jan-18			█	
SIV11764	Sec IV - Roadwork & Utilities at SR3 Section 1 Carriageway - Gully pipe (L1607-L1601, L2004-L2005)	25	28-Nov-17	28-Dec-17			█	
SIV11860	Sec IV - Roadwork & Utilities at SR3 Section 1 footpath - Drainage Works: future connection pipes	7	29-Dec-17	06-Jan-18			█	
Section 2 (L2301 - L2103)								
SIV11941	Sec IV - Roadwork & Utilities at SR3 Section 2 Carriageway - Drainage Works (L608-L1609)	30	19-Oct-17	23-Nov-17	█			
SIV11960	Sec IV - Roadwork & Utilities at SR3 Section 2 Carriageway - Watermain	10	20-Dec-17	03-Jan-18			█	



Activity ID	Activity Name	Remaining Dur	Early Start	Early Finish	2017				2018
					Oct	Nov	Dec	Jan	
SIV11942	Sec IV - Roadwork & Utilities at SR3 Section 2 Carriageway - Gully pipe (L2301-L2013, L1608-L1609)	22	24-Nov-17	19-Dec-17					
SIV12010	Sec IV - Roadwork & Utilities at SR3 Section 2 Carriageway - Road kerb & formation	24	20-Dec-17	19-Jan-18					
Section 3 (M/H1.6 - L2301)									
SIV12103	Sec IV - Roadwork & Utilities at SR3 Section 3 Carriageway - M1.7-M1.6: ELS	10	18-Oct-17	30-Oct-17					
SIV12104	Sec IV - Roadwork & Utilities at SR3 Section 3 Carriageway - M1.7-M1.6: Construct manhole & pipes	36	31-Oct-17	11-Dec-17					
SIV12105	Sec IV - Roadwork & Utilities at SR3 Section 3 Carriageway - M1.7-M1.6: backfilling & divert EVA	12	12-Dec-17	27-Dec-17					
SIV12120	Sec IV - Roadwork & Utilities at SR3 Section 3 Carriageway - Drainage Works (M1.6-C1.1-C1.2): Construct MH and pipes	28	28-Dec-17	30-Jan-18					
SIV12100	Sec IV - Roadwork & Utilities at SR3 Section 3 Carriageway - Drainage Works (M/H1.7 - L2301)	31	19-Oct-17	24-Nov-17					
SIV12140	Sec IV - Roadwork & Utilities at SR3 Section 3 Carriageway - Gully pipe (M/H 1.7 - L2301)	30	25-Nov-17	02-Jan-18					
SIV12180	Sec IV - Roadwork & Utilities at SR3 Section 3 footpath - U channel	14	24-Oct-17	09-Nov-17					
SIV12220	Sec IV - Roadwork & Utilities at SR3 Section 3 footpath - Paving block	45	10-Nov-17	04-Jan-18					
Section VII - Remainder Works									
Road & Drainage Works (Culvert L - M/H1.7, Adjacent to SR3)									
SVII11600	Sec IV - Roadwork & Utilities at SR3 Section 4 Carriageway - Drainage Works (Culvert L -MH1.7)	40	12-Dec-17	30-Jan-18					
Retaining Wall RW5 Construction									
SVII10860	Sec VII - Retaining wall RW5 - curing, removal formwork	15	07-Nov-17	23-Nov-17					
SVII10680	Sec VII - Retaining wall RW5 (bay 2) - construct base slab and wall	20	13-Oct-17	06-Nov-17					
SVII10820	Sec VII - Retaining wall RW5 (bay 4) - construct base slab and wall	20	13-Oct-17	06-Nov-17					
Landing Steps Construction									
Landing Steps BSW13									
SVII10920	Sec VII - Landing steps (BSW13) - install s.s. handrail / tactile / sign board / bollard	25	20-Nov-17	18-Dec-17					
SVII10900	Sec VII - Landing steps (BSW13) - install vertical fender / step fender	15	02-Nov-17	18-Nov-17					
Landing Steps BSW4									
SVII10980	Sec VII - Landing steps (BSW4) - install vertical fender / step fender	15	19-Dec-17	08-Jan-18					
Promenade Seawall Parapet Construction									
SVII13220	Sec VII - Zone D: Construct seawall block mass concrete coping	40	04-Dec-17	22-Jan-18					
SVII13140	Sec VII - Zone A1, A2 & B: Construct seawall parapet	35	02-Nov-17	12-Dec-17					
Promenade Footpath and EVA Construction									
Section 2									
SVII12610	Sec VII - section 2 footpath - drainage works (L2203 - L2202A) & U-channel	49	14-Nov-17	12-Jan-18					
Section 3									
SVII12850	Sec VII - section 3 footpath - watermain	18	13-Oct-17	03-Nov-17					
SVII12870	Sec VII - section 3 footpath - utilities (HEC, TCSS, HGC, PCCW)	44	04-Nov-17	27-Dec-17					
SVII12875	Sec VII - 3 footpath - drainage works :U chanel	14	28-Dec-17	13-Jan-18					
Section 4									
SVII13054	Sec VII - section 4 footpath - U channel	14	09-Dec-17	27-Dec-17					
SVII13052	Sec VII - section 4 footpath - watermain	21	15-Nov-17	08-Dec-17					
SVII13050	Sec VII - section 4 footpath - drainage works (L2203 -L2203A)	21	20-Oct-17	14-Nov-17					
SVII13055	Sec VII - section 4 footpath - utilities: HEC, TCSS, HEC & PCCW	56	09-Dec-17	15-Feb-18					
Section 5									



中國建築-利達聯營
CHINA STATE - LEADER JOINT VENTURE

CEDD Contract No. HK/2012/08
Wan Chai Development Phase II
Central - Wan Chai Bypass at Wan Chai West

Activity ID	Activity Name	Remaining Dur	Early Start	Early Finish	2017			2018
					Oct	Nov	Dec	Jan
SVII13275	Sec VII - section 5 footpath - watermain	21	26-Oct-17	20-Nov-17				
SVII13310	Sec VII - section 5 footpath - utilities: HEC, TCSS, HGC, PCCW	59	21-Nov-17	31-Jan-18				
Section 6								
SVII13514	Sec VII - section 6 footpath - U channel	20	14-Dec-17	09-Jan-18				
SVII13510	Sec VII - section 6 footpath - watermain	20	21-Nov-17	13-Dec-17				
SVII13490	Sec VII - section 6 footpath - drainage works(Culvert L - L2204)	25	21-Oct-17	20-Nov-17				
SVII13530	Sec VII - section 6 footpath - utilities: HEC, TCSS, HGC, PCCW	62	14-Dec-17	02-Mar-18				



Activity ID	Activity Name	Remaining Dur	Early Start	Early Finish	2018	2018	2018	
					Jan	Feb	Mar	
HK/2012/08 Revised Works Programme Rev.12.0(DD 20 November 2017)								
Dredging and Reclamation								
Marine Work Construction								
Zone D								
Seawall Construction - Zone D								
Seawall 10 & 11								
MAR20630	Zone D - Seawall 10 & 11: Install remaining seawall block	14	08-Jan-2018*	21-Jan-2018	[Green bar]			
MAR20650	Zone D - Seawall 10 & 11: Backfill Type A	7	22-Jan-2018	28-Jan-2018	[Green bar]			
MAR20670	Zone D - Seawall 10 & 11: Lay geotextile and filter	7	29-Jan-2018	04-Feb-2018	[Green bar]			
Works for Section Completion								
Construction								
Section III A - Road A2, A4 & A5								
Roadwork & Utilities - Section 1 (L1806 - L1801)								
SIIIA10270	Sec III A - section 1 carriageway - Construct M/H F9	7	20-Dec-2017	29-Dec-2017	[Green bar]			
SIIIA10272	Sec III A - section 1 carriageway - connect M/F F9 to existing pipe	7	30-Dec-2017	08-Jan-2018	[Green bar]			
SIIIA10274	Sec III A - section 1 carriageway - construct M/H F8C	7	20-Dec-2017	29-Dec-2017	[Green bar]			
SIIIA10276	Sec III A - section 1 carriageway - sewerage pipe from M/H F9 to F8C	3	30-Dec-2017	03-Jan-2018	[Green bar]			
SIIIA10278	Sec III A - section 1 carriageway - sewerage pipe from M/H 8C to F8B	15	30-Dec-2017	17-Jan-2018	[Green bar]			
SIIIA10279b	Sec III A - section 1 carriageway - sewerage pipe from M/H 8C to F8B (night time): construct M/H F8B	6	13-Dec-2017 A	28-Dec-2017	[Green bar]			
SIIIA10279c	Sec III A - section 1 carriageway - sewerage pipe from M/H 8C to F8B (night time): construct sewerage pipe	29	02-Jan-2018	03-Feb-2018	[Red bar]			
SIIIA10292	Sec III A - section 1 carriageway - construct M/H F8A	7	09-Jan-2018	16-Jan-2018	[Green bar]			
SIIIA10293	Sec III A - section 1 carriageway - sewerage pipe from M/H F8B - F8A (night time)	6	05-Feb-2018	10-Feb-2018	[Red bar]			
SIIIA10294	Sec III A - section 1 carriageway - sewerage pipe from M/H F8A - F8	11	17-Jan-2018	29-Jan-2018	[Green bar]			
SIIIA10295	Sec III A - carriageway - works prior TTA stage 5: excavation and duct laying of TCSS and public lighting	7	18-Jan-2018	25-Jan-2018	[Green bar]			
SIIIA10296	Sec III A - section 1 carriageway - works prior TTA stage 5: reinstate damaged manhole and pipeline	14	20-Dec-2017	08-Jan-2018	[Green bar]			
SIIIA10297	Sec III A - section 1 carriageway - works prior TTA stage 5: construct 225mm storm drain from D5.2 to existing	7	09-Jan-2018	16-Jan-2018	[Green bar]			
SIIIA10298	Sec III A - section 1 carriageway - works prior TTA stage 5: road kerb	5	26-Jan-2018	31-Jan-2018	[Green bar]			
SIIIA10301	Sec III A - section 1 carriageway - works prior TTA stage 5: road formation	2	01-Feb-2018	02-Feb-2018	[Green bar]			
SIIIA10302	Sec III A - section 1 carriageway - works prior TTA stage 5: laying asphalt	5	03-Feb-2018	08-Feb-2018	[Green bar]			
SIIIA10303	Sec III A - section 1 carriageway - works prior TTA stage 5: road marking & preparation works	3	12-Feb-2018	14-Feb-2018	[Red bar]			
SIIIA10310	Sec III A - section 1 carriageway - TTA stage 5: Implementation of TTA Stage 5	1	15-Feb-2018	15-Feb-2018	[Red dot]			
Roadwork & Utilities - Section 2 (L1810 - L1807)								
SIIIA12550	Sec III A - roadwork and utilities section 2 carriageway - Utilities: HEC along carriageway & Crossroad duct (HEC & Utilities)	7	25-Nov-2017 A	29-Dec-2017	[Green bar]			
SIIIA12570	Sec III A - roadwork and utilities section 2 carriageway - road kerb & formation	17	30-Dec-2017	19-Jan-2018	[Green bar]			
SIIIA12590	Sec III A - roadwork and utilities section 2 carriageway - black top	7	20-Jan-2018	27-Jan-2018	[Green bar]			

Data Date: 20-Dec-2017

- ◆ Current Milestone
- Actual Work
- Critical Remaining Work
- Remaining Work
- Remaining Level of Effort

3 Months Rolling Programme for Non-CR III Area (January 2018 - March 2018)
(Ref. to Revised Works Programme Rev.12)

Date	Revision	Checked	Approved
20-Dec-2017	12		



Activity ID	Activity Name	Remaining Dur	Early Start	Early Finish	2018		
					Jan	Feb	Mar
Roadwork & Utilities - Section 3 (L1808 - L1102)							
SI3A12710	Sec III A - roadwork and utilities section 3 carriageway - Drainage works (L1301 - L1102)	2	11-Dec-2017 A	21-Dec-2017			
SI3A12750	Sec III A - roadwork and utilities section 3 carriageway - gully pipe (L1808A - L1102)	12	22-Dec-2017	08-Jan-2018	█		
SI3A12762	Sec III A - roadwork and utilities section 3 carriageway - watermain	10	09-Jan-2018	19-Jan-2018		█	
SI3A12770	Sec III A - roadwork and utilities section 3 carriageway - utilities: HEC ducting (60m) & crossroad duct (PCCW & HGC)	16	20-Jan-2018	07-Feb-2018		█	
SI3A12790	Sec III A - roadwork and utilities section 3 carriageway - road kerb & formation	17	08-Feb-2018	02-Mar-2018			█
Roadwork & Utilities - Section 4 (L1406 - L1401)							
SI3A12950	Sec III A - roadwork and utilities section 4 carriageway - drainage works (L1402 - L1401)	4	11-Dec-2017 A	23-Dec-2017	█		
SI3A12970	Sec III A - roadwork and utilities section 4 carriageway - gully pipe (L1401)	10	27-Dec-2017	08-Jan-2018	█		
SI3A13000	Sec III A - roadwork and utilities section 4 carriageway - formation (L1401)	5	09-Jan-2018	13-Jan-2018		█	
SI3A13050	Sec III A - roadwork and utilities section 4 carriageway - black top (L1401)	5	15-Jan-2018	19-Jan-2018		█	
Roadwork & Utilities - Section 6 (L1102 - L1411)							
SI3A13380	Sec III A - roadwork and utilities section 6 carriageway - sealing up the gap beneath bay 12 of culvert L	0	08-Nov-2017 A	01-Dec-2017 A			
SI3A13385	Sec III A - roadwork and utilities section 6 carriageway - Waterproofing of water channel	3	02-Dec-2017 A	22-Dec-2017			
SI3A13389	Sec III A - roadwork and utilities section 6 carriageway - Backfilling of water channel from bay 16 to bay 20B	5	23-Dec-2017	30-Dec-2017			
SI3A13395	Sec III A - roadwork and utilities section 6 carriageway - Drainage works (L1101-L1102)	9	02-Jan-2018	11-Jan-2018	█		
SI3A13399	Sec III A - roadwork and utilities section 6 carriageway - gully pipe (L1101 - L1102)	8	12-Jan-2018	20-Jan-2018		█	
SI3A13444	Sec III A - roadwork and utilities section 6 carriageway - watermain (road crossing)	7	22-Jan-2018	29-Jan-2018		█	
SI3A13445	Sec III A - roadwork and utilities section 6 carriageway - utilities: crossed duct(HEC , HGC, PCCW)	13	30-Jan-2018	13-Feb-2018		█	
SI3A13450	Sec III A - roadwork and utilities section 6 carriageway - road kerb & formation	18	14-Feb-2018	09-Mar-2018			█
Section V - Remaining At-Grade Road & Road P2							
Roadwork & Utilities							
Section 1 (L1504 - L1900)							
SV12456	Sec V-Roadwork & Utilities Section 1 - implementation of TTA stage 5E (closure of slow lane at northbound of Expo	1	15-Jan-2018*	15-Jan-2018		█	
SV12460	Sec V - Roadwork & Utilities Section 1 - drainage works (L1902 - L1900)	15	16-Jan-2018	01-Feb-2018		█	
SV12462	Sec V - Roadwork & Utilities Section 1 - gully pipe (L1902 - L1900)	6	02-Feb-2018	08-Feb-2018		█	
SV12464	Sec V - Roadwork & Utilities Section 1 - temp. reinstatement to match with existing Expo Drive	14	09-Feb-2018	28-Feb-2018		█	
SV12540	Sec V - Roadwork & Utilities Section 1 footpath - Watermain	6	11-Dec-2017 A	28-Dec-2017			
SV12570	Sec V - Roadwork & Utilities Section 1 footpath - utilities:TCSS	30	29-Dec-2017	02-Feb-2018	█		
SV12580	Sec V - Roadwork & Utilities Section 1 footpath - paving block	29	03-Feb-2018	12-Mar-2018		█	
Section 2 (L1510 - L1504)							
SV12622	Sec V - Roadwork & Utilities Section 1 Carriageway - gully pipe (L1611 - L1609)	8	13-Dec-2017 A	30-Dec-2017	█		
SV12624	Sec V - Roadwork & Utilities Section 1 Carriageway - road kerb & formation	21	02-Jan-2018	25-Jan-2018	█		
SV12626	Sec V - Roadwork & Utilities Section 1 Carriageway - black top	13	26-Jan-2018	09-Feb-2018		█	
SV12690	Sec V - Roadwork & Utilities Section 2 footpath - Drainage Works (L2104 - L2105)	18	23-Dec-2017	16-Jan-2018	█		
SV12692	Sec V - Roadwork & Utilities Section 2 footpath - U channel	14	17-Jan-2018	01-Feb-2018		█	
SV12695	Sec V - Roadwork & Utilities Section 2 footpath - Watermain	13	02-Feb-2018	20-Feb-2018		█	
Section 3 (Culvert L - L1510)							
SIV12810	Sec V - Roadwork & Utilities Section 3 Carriageway - Gully pipe (Culvert L - L1611)	3	24-Nov-2017 A	22-Dec-2017	█		
SIV12820	Sec V - Roadwork & Utilities Section 3 Carriageway - Black top	21	23-Dec-2017	19-Jan-2018	█		



Activity ID	Activity Name	Remaining Dur	Early Start	Early Finish	2018		
					Jan	Feb	Mar
SIV12844	Sec V - Roadwork & Utilities Section 3 footpath - U channel	6	02-Dec-2017 A	28-Dec-2017			
SIV12850	Sec V - Roadwork & Utilities footpath - Watermain	14	29-Dec-2017	15-Jan-2018			
SIV12860	Sec V - Roadwork & Utilities Section 3 footpath - Utilities: TCSS, HGC, PCCW)	34	16-Jan-2018	27-Feb-2018			
Section IV - Slip Road 3							
Roadwork & Utilities							
Section 1 (L1608 - L1601)							
SIV11740	Sec IV - Re-Possion of the areas S and P	0	08-Dec-2017 A				
SIV11742	Sec IV - Re-Possion of the area at the end of Road P2	0	30-Dec-2017*				
SIV11744	Sec IV - sign gantry DS20 footing (type 1): remove existing 600mm drain pipe	4	20-Dec-2017*	23-Dec-2017			
SIV11745	Sec IV - sign gantry DS20 footing (type 1): excavation	2	27-Dec-2017	28-Dec-2017			
SIV11746	Sec IV - sign gantry DS20 footing (type 1): footing structure	14	29-Dec-2017	15-Jan-2018			
SIV11747	Sec IV - sign gantry DS20 & DS21 footing (type 2): excavation & ELS	21	30-Dec-2017	24-Jan-2018			
SIV11748	Sec IV - sign gantry DS20 & DS21 footing (type 2): footing structure	21	25-Jan-2018	21-Feb-2018			
SIV11760	Sec IV - Roadwork & Utilities at SR3 Section 1 Carriageway - Drainage Works (L1607 - L1601)	30	09-Dec-2017 A	26-Jan-2018			
SIV11761	Sec IV - Roadwork & Utilities at SR3 Section 1 Carriageway - Drainage Works (L1602 - L2005)	7	16-Jan-2018	23-Jan-2018			
SIV11762	Sec IV - Roadwork & Utilities at SR3 Section 1 Carriageway - Drainage Works (L2103-L2101A)	17	27-Jan-2018	15-Feb-2018			
Section 2 (L2301 - L2103)							
SIV11940	Sec IV - Roadwork & Utilities at SR3 Section 2 Carriageway - Drainage Works (L2301-L2103)	5	09-Dec-2017 A	27-Dec-2017			
SIV11942	Sec IV - Roadwork & Utilities at SR3 Section 2 Carriageway - Gully pipe (L2301-L2013, L1608-L1609)	22	28-Dec-2017	23-Jan-2018			
SIV11960	Sec IV - Roadwork & Utilities at SR3 Section 2 Carriageway - Watermain	10	24-Jan-2018	03-Feb-2018			
SIV12010	Sec IV - Roadwork & Utilities at SR3 Section 2 Carriageway - Road kerb & formation	20	05-Feb-2018	02-Mar-2018			
Section 3 (M/H1.6 - L2301)							
SIV12092	Sec IV - Roadwork & Utilities at SR3 Section 3 Carriageway - Drainage Works (M/H1.7 - L2301)	59	28-Dec-2017	10-Mar-2018			
SIV12096	Sec IV - Roadwork & Utilities at SR3 Section 3 Carriageway - M1.7-M1.6: construct manholes	28	29-Nov-2017 A	24-Jan-2018			
SIV12102	Sec IV - Roadwork & Utilities at SR3 Section 3 Carriageway - M1.7-M1.6: demolish existing seawall	13	25-Jan-2018	08-Feb-2018			
SIV12103	Sec IV - Roadwork & Utilities at SR3 Section 3 Carriageway - M1.7-M1.6: ELS	10	09-Feb-2018	23-Feb-2018			
Section VII - Remainder Works							
Road & Drainage Works (Culvert L - M/H1.7, Adjacent to SR3)							
SVII11600	Sec IV - Roadwork & Utilities at SR3 Section 4 Carriageway - Drainage Works (Culvert L -MH1.7)	59	08-Jan-2018	20-Mar-2018			
Retaining Wall RW5 Construction							
SVII10660	Sec VII - Retaining Wall RW5 (bay 1) - construct base slab and wall	22	05-Feb-2018	05-Mar-2018			
SVII10800	Sec VII - Retaining wall RW5 (bay 3) - construct base slab and wall	22	05-Feb-2018	05-Mar-2018			
Promenade Seawall Parapet Construction & EVA							
Promenade Footpath							
Section 2							
SVII12610	Sec VII - section 2 footpath - drainage works : L2202 - L2203A	20	29-Jan-2018	23-Feb-2018			
Section 3							
SVII12850	Sec VII - section 3 footpath - watermain	17	20-Jan-2018	08-Feb-2018			
SVII12870	Sec VII - section 3 footpath - utilities (HEC, TCSS, HGC, PCCW)	40	09-Feb-2018	03-Apr-2018			
Section 4							



Activity ID	Activity Name	Remaining Dur	Early Start	Early Finish	2018		
					Jan	Feb	Mar
SVII13050	Sec VII - section 4 footpath - drainage works (L2203 -L2203A)	0	21-Nov-2017 A	14-Dec-2017 A			
SVII13110	Sec VII - section 4 footpath - paving block	25	14-Feb-2018	17-Mar-2018		[Green bar spanning Feb and Mar]	
Section 5							
SVII13270	Sec VII - section 5 footpath - drainage works :L2203A -L2204	10	15-Dec-2017 A	03-Jan-2018	[Green bar]		
SVII13275	Sec VII - section 5 footpath - watermain	14	04-Jan-2018	19-Jan-2018	[Green bar]		
SVII13310	Sec VII - section 5 footpath - utilities: HEC, TCSS, HGC, PCCW	42	20-Jan-2018	13-Mar-2018		[Green bar spanning Feb and Mar]	
Section 6							
SVII13490	Sec VII - section 6 footpath - drainage works(Culvert L - L2204)	14	12-Jan-2018	27-Jan-2018	[Green bar]		
SVII13510	Sec VII - section 6 footpath - watermain	13	03-Feb-2018	21-Feb-2018		[Green bar]	
Section X - Protection & Preservation of Trees							
Soft Landscaping Works							
SX10020	Sec X - Protection & Preservation of Trees	276	31-Jan-2013 A	21-Sep-2018	[Red bar spanning all months]		

Activity ID	Activity Name	Rem Dur	Start	Finish	2017							2018							
					December							January				February			
					19	26	03	10	17	24	31	07	14	21	28	04	11	18	25
3MRP (Nov 2017 - Feb 2017)																			
03 - PRELIMINARY WORKS																			
03.3 - Interface Works																			
0330-1040	Relocate FEHD to Permanent Depot	9	02-Jan-18	11-Jan-18															
0330-1045	Clean-up Area after Relocation	3	12-Jan-18	15-Jan-18															
FEHD Permanent Depot																			
0330-1071	Installation of Post (43Nos) > Facility Area 5 & 10	6	27-Nov-17*	02-Dec-17															
0330-1073	Construction of Steel Roof > Facility Area 5 & 10	6	01-Dec-17	07-Dec-17															
0330-1075	Sprinkler System Installation > Facility Area 5 & 10	7	06-Dec-17	13-Dec-17															
0330-1077	T & C of Sprinkler System > Facility Area 5 & 10	6	14-Dec-17	20-Dec-17															
0330-1081	Installation of Post (73Nos) > Facility Area 6, 8 & 9	9	20-Nov-17	29-Nov-17															
0330-1095	Signage Works & remaining light post	3	21-Dec-17	23-Dec-17															
A4910	Road Marking & Misc Works	8	21-Dec-17	30-Dec-17															
10 - SECTION X OF THE WORKS																			
10.1 - E/B Bridges (Bridge D, E and F)																			
10.1.4 - Bridge E / Hing Fat Slip Road																			
Bridge Construction																			
1014-2280	Bridge E - Construct Permanent parapet at "TB" Tie-in	35	08-Sep-17 A	30-Dec-17															
10.3 - Middle Bridge (Bridge F)																			
10.3.2 - Bridge Construction																			
Bridge F3B																			
1032-2540	Bridge F3B - Construct Int. Double Noise Encl. (83m) (stage 1)	12	19-Sep-17 A	02-Dec-17															
1032-2550	Bridge F3B - Installation of CC & Temporary Lighting	25	04-Dec-17	03-Jan-18															
1032-2560	Bridge F3B - Deck Road Waterproofing, Surfacing & Marking	6	04-Jan-18	10-Jan-18															
1032-2561	Divert 2 Lane Traffic (Stage 1)	0	11-Jan-18																
1032-2562	Bridge F3B - Construct Int. Double Noise Encl. (83m) (stage 2)	27	11-Jan-18	10-Feb-18															
1032-2563	Bridge F3B - Deck Road Waterproofing, Surfacing & Marking	6	06-Feb-18	12-Feb-18															
1032-2564	Divert 2 Lane Traffic (Stage 2)	0	13-Feb-18																
Bridge F2B																			
1032-3080	Bridge F2B - Longitudinal Stitching	6	06-Oct-17 A	25-Nov-17															
1032-3100	Bridge F2B - Construct Median Barriers	12	25-Oct-17 A	09-Dec-17															
1032-3120	Bridge F2B - Construct Int. Double Noise Encl.	18	11-Nov-17 A	02-Jan-18															
1032-3140	Bridge F2B - Deck Road Waterproofing, Surfacing & Marking	6	04-Jan-18	10-Jan-18															
Bridge F1B2																			
1032-3810	Dismantle LGB	20	13-Nov-17 A	12-Dec-17															
1032-3820	Prestress External Tendon of Bridge F1B2	7	18-Nov-17 A	27-Nov-17															
1032-3840	Bridge F1B2 - Longitudinal Stitching	33	19-Jan-18	01-Mar-18															
1032-3860	Bridge F1B2 - Southern Parapet	30	13-Dec-17	18-Jan-18															
1032-3880	Bridge F1B2 - Construct Int. Double Noise Encl. Bridge F1B2	48	13-Jan-18	13-Mar-18															

█ Remaining Level of Effort █ Remaining Work
█ Actual Level of Effort █ Critical Remaining Work
█ Actual Work ◆ ◆ Milestone

Contract HY/2009/19
Three Months Rolling Programme (20.Nov.2017 to 19.Feb.2018)

Activity ID	Activity Name	Rem Dur	Start	Finish	2017							2018							
					December							January			February				
					19	26	03	10	17	24	31	07	14	21	28	04	11	18	25
Bridge F1B1																			
1032-1700	Dismantle LG1 and Cart away	20	11-Nov-17 A	12-Dec-17	Dismantle LG1 and Cart away														
1032-1720	Prestress Extenral Tendon of Bridge F1B2	12	02-Dec-17	15-Dec-17	Prestress Extenral Tendon of Bridge F1B2														
1032-1740	Bridge F1B1 - Longitudinal Stitching	60	16-Dec-17	01-Mar-18	Bridge F1B1 - Longitudinal Stitching														
1032-1760	Bridge F1B1 - Construct Median Barriers	30	29-Dec-17	02-Feb-18	Bridge F1B1 - Construct Median Barriers														
1032-1780	Bridge F1B1 - Construct Int. Double Noise Encl. Bridge F1B2	46	16-Jan-18	13-Mar-18	Bridge F1B1 - Construct Int. Double Noise Encl. Bridge F1B2														
Bridge F5																			
1032-3980	Bridge F5 Deck Surfacing & Marking	5	04-Jan-18	10-Jan-18	Bridge F5 Deck Surfacing & Marking														
1032-4000	TTA Cutting of Deck Bet Temp. TD & E/B, Cons. of Parapet, Noise Encl.(Northside) start	0	13-Feb-18		TTA Cutting of Deck Bet T														
1032-4040	Cutting of Deck Between Temp. TD & E/B > Pier F5-F8	12	13-Feb-18	01-Mar-18	Cutting of Deck Between Temp. TD & E/B > Pier F5-F8														
All Middle Bridge F (Common)																			
1032-4220	Bridge F TCSS/E&M Ducts and Supports (F1B1, F1B2, F2B, F3B)	22	25-Oct-17 A	10-Jan-18	Bridge F TCSS/E&M Ducts and Supports (F1B1, F1B2, F2B, F3B)														
1032-4240	Fresh Water Main 150DI at Bridge F Deck	87	27-Nov-17	13-Mar-18	Fresh Water Main 150DI at Bridge F Deck														
1032-4260	Bridge F Sign Gantries and Misc. Mounting Structure/Support	46	26-Dec-17	21-Feb-18*	Bridge F Sign Gantries and Misc. Mounting Structure/Support														
1032-4350	TCSS/LV Ducts at Zone 5 (Nigth work)	24	10-Nov-17 A	16-Dec-17	TCSS/LV Ducts at Zone 5 (Nigth work)														
1032-4353	TCSS/LV Ducts at Zone 1 & 3 (daywork)	16	20-Nov-17	07-Dec-17	TCSS/LV Ducts at Zone 1 & 3 (daywork)														
1032-4354	TCSS/LV Ducts at Zone 7 (Nigth work)	17	18-Dec-17	08-Jan-18	TCSS/LV Ducts at Zone 7 (Nigth work)														
1032-4355	TCSS/LV Ducts at Zone 2 (daywork)	9	18-Dec-17	28-Dec-17	TCSS/LV Ducts at Zone 2 (daywork)														
1032-4356	Sign Gantry (DS06B, DS06A & FADS06) (Nigth work)	50	22-Feb-18	24-Apr-18	Sign Gantry (DS06B, DS06A & FADS06) (Nigth work)														
10.6 - Tunnel Approach Ramp																			
10.6.1 - Approach Ramp (Excluding Portion IIB)																			
Structure Works																			
1061-6060	Bay 5 & 6 > Side Wall - Lower Portion - Install Waterproofing Membrane	0	20-Nov-17 A	20-Nov-17	Bay 5 & 6 > Side Wall - Lower Portion - Install Waterproofing Membrane														
1061-6080	Bay 5 & 6 > Side Wall - Lower Portion - Rebar Fixing	2	20-Nov-17	21-Nov-17	Bay 5 & 6 > Side Wall - Lower Portion - Rebar Fixing														
1061-6100	Bay 5 & 6 > Side Wall - Lower Portion - Erect Formworks	2	22-Nov-17	23-Nov-17	Bay 5 & 6 > Side Wall - Lower Portion - Erect Formworks														
1061-6120	Bay 5 & 6 > Side Wall - Lower Portion - Concreting	1	24-Nov-17	24-Nov-17	Bay 5 & 6 > Side Wall - Lower Portion - Concreting														
1061-6140	Bay 5 & 6 > Side Wall - Lower Portion - Backfill Behind Side Wall	3	25-Nov-17	28-Nov-17	Bay 5 & 6 > Side Wall - Lower Portion - Backfill Behind Side Wall														
1061-6160	Bay 5 & 6 > Side Wall - Lower Portion - Cast Temp Concrete Slab (3days curing)	4	29-Nov-17	02-Dec-17	Bay 5 & 6 > Side Wall - Lower Portion - Cast Temp Concrete Slab (3days curing)														
1061-6180	Bay 5 & 6 > Side Wall - Lower Portion - Remove 1st & 2nd Struts & Waling	6	01-Dec-17	07-Dec-17	Bay 5 & 6 > Side Wall - Lower Portion - Remove 1st & 2nd Struts & Waling														
1061-6200	Bay 5 & 6 > Side Wall - Upper Portion - Erect Scaffolding & Working Platform	4	06-Dec-17	09-Dec-17	Bay 5 & 6 > Side Wall - Upper Portion - Erect Scaffolding & Working Platform														
1061-6220	Bay 5 & 6 > Side Wall - Upper Portion - Erect Formwork (one side)	6	08-Dec-17	14-Dec-17	Bay 5 & 6 > Side Wall - Upper Portion - Erect Formwork (one side)														
1061-6240	Bay 5 & 6 > Side Wall - Upper Portion - Install Waterproofing Membrane	3	14-Dec-17	16-Dec-17	Bay 5 & 6 > Side Wall - Upper Portion - Install Waterproofing Membrane														
1061-6260	Bay 5 & 6 > Side Wall - Upper Portion - Rebar Fixing	5	18-Dec-17	22-Dec-17	Bay 5 & 6 > Side Wall - Upper Portion - Rebar Fixing														
1061-6280	Bay 5 & 6 > Side Wall - Upper Portion - Complete Formworks	4	21-Dec-17	26-Dec-17	Bay 5 & 6 > Side Wall - Upper Portion - Complete Formworks														
1061-6300	Bay 5 & 6 > Side Wall - Upper Portion - Concreting	1	27-Dec-17	27-Dec-17	Bay 5 & 6 > Side Wall - Upper Portion - Concreting														
1061-6440	Bay 7 & 8 > Side Wall - Lower Portion - Install Waterproofing Membrane	1	22-Nov-17	22-Nov-17	Bay 7 & 8 > Side Wall - Lower Portion - Install Waterproofing Membrane														
1061-6460	Bay 7 & 8 > Side Wall - Lower Portion - Rebar Fixing	3	23-Nov-17	25-Nov-17	Bay 7 & 8 > Side Wall - Lower Portion - Rebar Fixing														
1061-6480	Bay 7 & 8 > Side Wall - Lower Portion - Erect Formworks	3	27-Nov-17	29-Nov-17	Bay 7 & 8 > Side Wall - Lower Portion - Erect Formworks														
1061-6500	Bay 7 & 8 > Side Wall - Lower Portion - Concreting	1	30-Nov-17	30-Nov-17	Bay 7 & 8 > Side Wall - Lower Portion - Concreting														

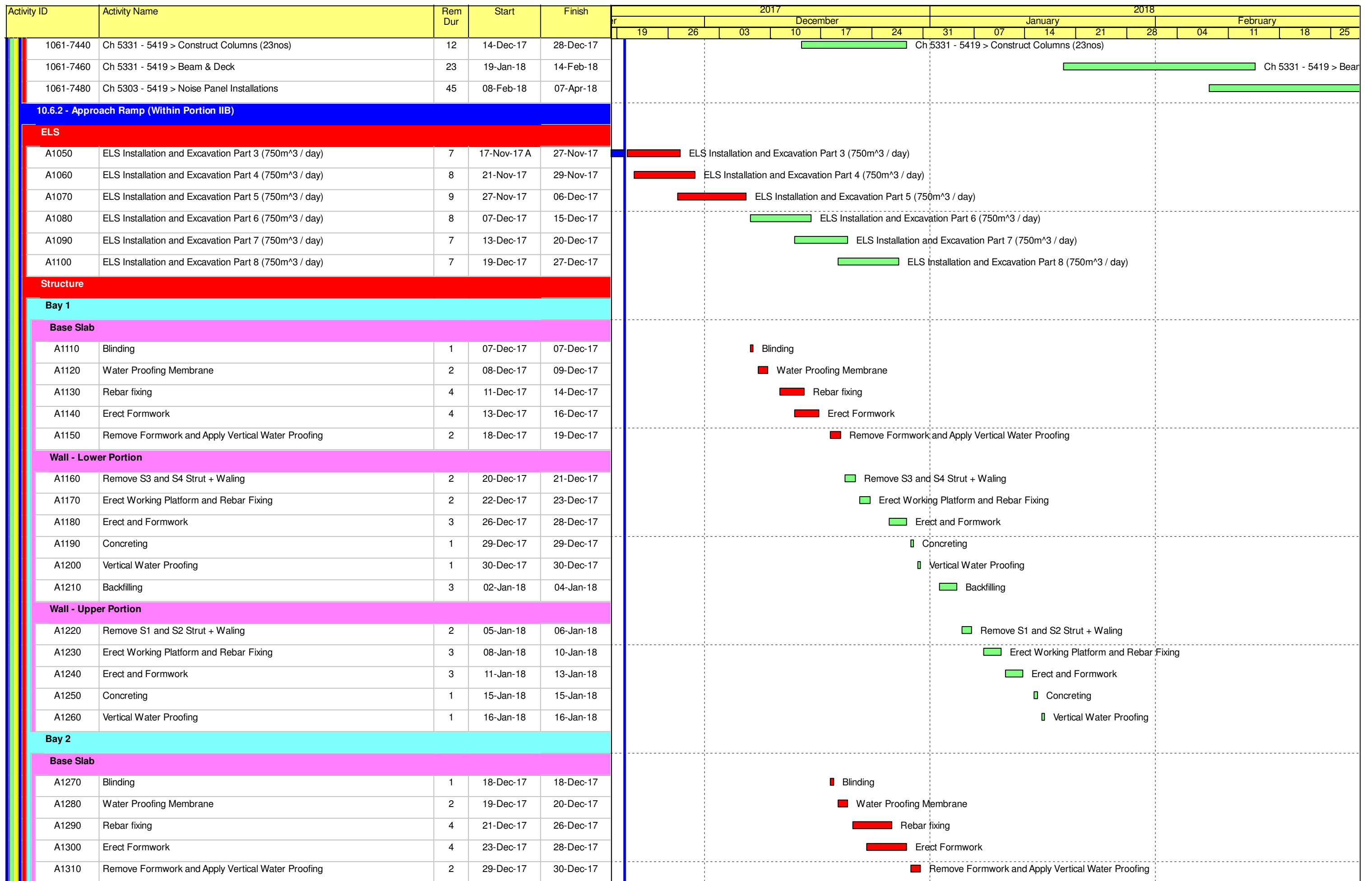
	Remaining Level of Effort		Remaining Work
	Actual Level of Effort		Critical Remaining Work
	Actual Work		Milestone

Contract HY/2009/19
Three Months Rolling Programme (20.Nov.2017 to 19.Feb.2018)

Activity ID	Activity Name	Rem Dur	Start	Finish	2017							2018													
					December							January							February						
					19	26	03	10	17	24	31	07	14	21	28	04	11	18	25						
1061-6520	Bay 7 & 8 > Side Wall - Lower Portion - Backfill Behind Side Wall	3	01-Dec-17	04-Dec-17	Bay 7 & 8 > Side Wall - Lower Portion - Backfill Behind Side Wall																				
1061-6540	Bay 7 & 8 > Side Wall - Lower Portion - Cast Temp Concrete Slab (3days curing)	4	05-Dec-17	09-Dec-17	Bay 7 & 8 > Side Wall - Lower Portion - Cast Temp Concrete Slab (3days curing)																				
1061-6560	Bay 7 & 8 > Side Wall - Lower Portion - Remove 1st & 2nd Struts & Waling	6	07-Dec-17	14-Dec-17	Bay 7 & 8 > Side Wall - Lower Portion - Remove 1st & 2nd Struts & Waling																				
1061-6580	Bay 7 & 8 > Side Wall - Upper Portion - Erect Scaffolding & Working Platform	4	12-Dec-17	16-Dec-17	Bay 7 & 8 > Side Wall - Upper Portion - Erect Scaffolding & Working Platform																				
1061-6600	Bay 7 & 8 > Side Wall - Upper Portion - Erect Formwork (one side)	5	14-Dec-17	20-Dec-17	Bay 7 & 8 > Side Wall - Upper Portion - Erect Formwork (one side)																				
1061-6620	Bay 7 & 8 > Side Wall - Upper Portion - Install Waterproofing Membrane	3	18-Dec-17	21-Dec-17	Bay 7 & 8 > Side Wall - Upper Portion - Install Waterproofing Membrane																				
1061-6640	Bay 7 & 8 > Side Wall - Upper Portion - Rebar Fixing	4	20-Dec-17	26-Dec-17	Bay 7 & 8 > Side Wall - Upper Portion - Rebar Fixing																				
1061-6660	Bay 7 & 8 > Side Wall - Upper Portion - Complete Formworks	3	23-Dec-17	28-Dec-17	Bay 7 & 8 > Side Wall - Upper Portion - Complete Formworks																				
1061-6680	Bay 7 & 8 > Side Wall - Upper Portion - Concreting	1	28-Dec-17	29-Dec-17	Bay 7 & 8 > Side Wall - Upper Portion - Concreting																				
1061-6820	Bay 1 - 8 > Side Wall - Backfilling Works	23	01-Dec-17	29-Dec-17	Bay 1 - 8 > Side Wall - Backfilling Works																				
Retaining Walls & Trough Structure B,C & D																									
1061-6860	Construct Retaining Wall E Pile Cap (7 nos)	41	06-Mar-17 A	08-Jan-18	Construct Retaining Wall E Pile Cap (7 nos)																				
1061-6880	Construct Retaining Wall E2 (Ch 5371 - 5398)	18	29-Dec-17	19-Jan-18	Construct Retaining Wall E2 (Ch 5371 - 5398)																				
1061-6900	Construct Retaining Wall E1 (Ch 5332 - 5371)	18	09-Jan-18	29-Jan-18	Construct Retaining Wall E1 (Ch 5332 - 5371)																				
1061-6920	Construct Retaining Wall E3 (Ch 5398 - 5419)	14	20-Nov-17	05-Dec-17	Construct Retaining Wall E3 (Ch 5398 - 5419)																				
1061-6985	Parapet at Wall above Retaining Wall F	54	20-Nov-17	23-Jan-18	Parapet at Wall above Retaining Wall F																				
1061-6987	Parapet at Wall above Retaining Wall E3	16	06-Dec-17	23-Dec-17	Parapet at Wall above Retaining Wall E3																				
1061-6989	Parapet at Wall above Retaining Wall E1 & 2	57	20-Jan-18	31-Mar-18	Parapet at Wall above Retaining Wall E1 & 2																				
1061-7000	Backfill to Road Founding Level	14	06-Dec-17	21-Dec-17	Backfill to Road Founding Level																				
1061-7020	Falseworks System for Landscape Deck	18	22-Dec-17	13-Jan-18	Falseworks System for Landscape Deck																				
1061-7040	Excavate for Foundation of Retaining Wall D	7	22-Dec-17	30-Dec-17	Excavate for Foundation of Retaining Wall D																				
1061-7060	Construct Retaining Wall D Footing (Ch 190 - 170)	18	02-Jan-18	22-Jan-18	Construct Retaining Wall D Footing (Ch 190 - 170)																				
1061-7080	Construct Retaining Wall D (Ch 190 - 170)	32	30-Jan-18	10-Mar-18	Construct Retaining Wall D (Ch 190 - 170)																				
1061-7120	Excavate to Founding Level Trough B Structure	12	02-Jan-18	15-Jan-18	Excavate to Founding Level Trough B Structure																				
1061-7140	Construct Trough Structure B Base Slab	18	16-Jan-18	05-Feb-18	Construct Trough Structure B Base Slab																				
1061-7180	Excavate to Founding Level Trough C Structure	24	16-Jan-18	12-Feb-18	Excavate to Founding Level Trough C Structure																				
1061-7200	Construct Trough Structure C Base Slab	18	13-Feb-18	08-Mar-18	Construct Trough Structure C Base Slab																				
1061-7220	Construct Trough Structure C Side Walls	24	09-Mar-18	09-Apr-18	Construct Trough Structure C Side Walls																				
1061-7240	Road & other Misc Works at Trough D	15	10-Apr-18	26-Apr-18	Road & other Misc Works at Trough D																				
Landscape Deck																									
1061-7260	Ch 5331 - 5419 > Construct LD Middle Pile Cap (7nos)	21	20-Nov-17	13-Dec-17	Ch 5331 - 5419 > Construct LD Middle Pile Cap (7nos)																				
1061-7280	Bay 5 & 6 > Ch 5262 - 5292 - Construct Columns (6 nos)	12	28-Dec-17	11-Jan-18	Bay 5 & 6 > Ch 5262 - 5292 - Construct Columns (6 nos)																				
1061-7300	Bay 5 & 6 > Ch 5262 - 5292 - Beam & Deck (30m)	23	12-Jan-18	07-Feb-18	Bay 5 & 6 > Ch 5262 - 5292 - Beam & Deck (30m)																				
1061-7320	Bay 4 > Ch 5292 - 5303 - Construct Columns (3 nos)	12	27-Nov-17	09-Dec-17	Bay 4 > Ch 5292 - 5303 - Construct Columns (3 nos)																				
1061-7340	Bay 4 > Ch 5292 - 5303 - Beam & Deck (12m)	24	28-Dec-17	25-Jan-18	Bay 4 > Ch 5292 - 5303 - Beam & Deck (12m)																				
1061-7360	Bay 7 & 8 > Ch 5232 - 5262 - Construct Columns (9 nos)	12	12-Jan-18	25-Jan-18	Bay 7 & 8 > Ch 5232 - 5262 - Construct Columns (9 nos)																				
1061-7380	Bay 7 & 8 > Ch 5232 - 5262 - Beam & Deck (30m)	23	19-Jan-18	14-Feb-18	Bay 7 & 8 > Ch 5232 - 5262 - Beam & Deck (30m)																				
1061-7400	Bay 1 to 3 > Ch 5303 - 5331 > Construct Columns (9 nos)	21	27-Nov-17	20-Dec-17	Bay 1 to 3 > Ch 5303 - 5331 > Construct Columns (9 nos)																				
1061-7420	Bay 1 to 3 > Ch 5303 - 5331 > Beam & Deck	23	02-Jan-18	27-Jan-18	Bay 1 to 3 > Ch 5303 - 5331 > Beam & Deck																				

Remaining Level of Effort Remaining Work
 Actual Level of Effort Critical Remaining Work
 Actual Work Milestone

Contract HY/2009/19
Three Months Rolling Programme (20.Nov.2017 to 19.Feb.2018)



█ Remaining Level of Effort █ Remaining Work
█ Actual Level of Effort █ Critical Remaining Work
█ Actual Work ◆ Milestone

Contract HY/2009/19
Three Months Rolling Programme (20.Nov.2017 to 19.Feb.2018)

Activity ID	Activity Name	Rem Dur	Start	Finish	2017						2018									
					December						January			February						
					19	26	03	10	17	24	31	07	14	21	28	04	11	18	25	
Wall - Lower Portion																				
A1320	Remove S3 and S4 Strut + Waling	2	02-Jan-18	03-Jan-18																
A1330	Erect Working Platform and Rebar Fixing	2	04-Jan-18	05-Jan-18																
A1340	Erect and Formwork	3	06-Jan-18	09-Jan-18																
A1350	Concreting	1	10-Jan-18	10-Jan-18																
A1360	Vertical Water Proofing	1	11-Jan-18	11-Jan-18																
A1370	Backfilling	3	12-Jan-18	15-Jan-18																
Wall - Upper Portion																				
A1380	Remove S1 and S2 Strut + Waling	2	16-Jan-18	17-Jan-18																
A1390	Erect Working Platform and Rebar Fixing	3	18-Jan-18	20-Jan-18																
A1400	Erect and Formwork	3	22-Jan-18	24-Jan-18																
A1410	Concreting	1	25-Jan-18	25-Jan-18																
A1420	Vertical Water Proofing	1	26-Jan-18	26-Jan-18																
Bay 3																				
Base Slab																				
A1430	Blinding	1	29-Dec-17	29-Dec-17																
A1440	Water Proofing Membrane	2	30-Dec-17	02-Jan-18																
A1450	Rebar fixing	4	03-Jan-18	06-Jan-18																
A1460	Erect Formwork	4	05-Jan-18	09-Jan-18																
A1470	Remove Formwork and Apply Vertical Water Proofing	2	10-Jan-18	11-Jan-18																
Wall - Lower Portion																				
A1480	Remove S3 and S4 Strut + Waling	2	12-Jan-18	13-Jan-18																
A1490	Erect Working Platform and Rebar Fixing	2	15-Jan-18	16-Jan-18																
A1500	Erect and Formwork	3	17-Jan-18	19-Jan-18																
A1510	Concreting	1	20-Jan-18	20-Jan-18																
A1520	Vertical Water Proofing	1	22-Jan-18	22-Jan-18																
A1530	Backfilling	3	23-Jan-18	25-Jan-18																
Wall - Upper Portion																				
A1540	Remove S1 and S2 Strut + Waling	2	26-Jan-18	27-Jan-18																
A1550	Erect Working Platform and Rebar Fixing	2	29-Jan-18	30-Jan-18																
A1560	Erect and Formwork	3	31-Jan-18	02-Feb-18																
A1570	Concreting	1	03-Feb-18	03-Feb-18																
A1580	Vertical Water Proofing	1	05-Feb-18	05-Feb-18																
Bay 4																				
Base Slab																				
A1590	Blinding	1	10-Jan-18	10-Jan-18																
A1600	Water Proofing Membrane	2	11-Jan-18	12-Jan-18																
A1610	Rebar fixing	4	13-Jan-18	17-Jan-18																
A1620	Erect Formwork	4	18-Jan-18	22-Jan-18																

█ Remaining Level of Effort Remaining Work
█ Actual Level of Effort Critical Remaining Work
█ Actual Work ◆ Milestone

Contract HY/2009/19
Three Months Rolling Programme (20.Nov.2017 to 19.Feb.2018)

Activity ID	Activity Name	Rem Dur	Start	Finish	2018																	
					January					February					March				April			
					21	28	04	11	18	25	04	11	18	25	01	08	15	22	29			
3MRP (Jan 2018 - April 2018)																						
03 - PRELIMINARY WORKS																						
03.3 - Interface Works																						
FEHD Permanent Depot																						
0330-1071	Installation of Post (43Nos) > Facility Area 5 & 10	6	22-Jan-18*	27-Jan-18	Installation of Post (43Nos) > Facility Area 5 & 10																	
0330-1073	Construction of Steel Roof > Facility Area 5 & 10	6	26-Jan-18	01-Feb-18	Construction of Steel Roof > Facility Area 5 & 10																	
0330-1075	Sprinkler System Installation > Facility Area 5 & 10	7	31-Jan-18	07-Feb-18	Sprinkler System Installation > Facility Area 5 & 10																	
0330-1077	T & C of Sprinkler System > Facility Area 5 & 10	6	08-Feb-18	14-Feb-18	T & C of Sprinkler System > Facility Area 5 & 10																	
0330-1081	Installation of Post (73Nos) > Facility Area 6, 8 & 9	9	20-Jan-18	30-Jan-18	Installation of Post (73Nos) > Facility Area 6, 8 & 9																	
10 - SECTION X OF THE WORKS																						
10.3 - Middle Bridge (Bridge F)																						
10.3.2 - Bridge Construction																						
Bridge F3B																						
1032-2562	Bridge F3B - Construct Int. Double Noise Encl. (83m) (stage 2)	21	15-Jan-18 A	13-Feb-18	Bridge F3B - Construct Int. Double Noise Encl. (83m) (stage 2)																	
1032-2563	Bridge F3B - Deck Road Waterproofing, Surfacing & Marking	6	08-Feb-18	14-Feb-18	Bridge F3B - Deck Road Waterproofing, Surfacing & Marking																	
1032-2564	Divert 2 Lane Traffic (Stage 2)	0	15-Feb-18		◆ Divert 2 Lane Traffic (Stage 2)																	
Bridge F1B2																						
1032-3840	Bridge F1B2 - Longitudinal Stitching	27	19-Jan-18 A	01-Mar-18	Bridge F1B2 - Longitudinal Stitching																	
1032-3860	Bridge F1B2 - Southern Parapet	5	14-Dec-17 A	25-Jan-18	Bridge F1B2 - Southern Parapet																	
1032-3880	Bridge F1B2 - Construct Int. Double Noise Encl. Bridge F1B2	30	13-Jan-18 A	27-Feb-18	Bridge F1B2 - Construct Int. Double Noise Encl. Bridge F1B2																	
1032-3900	Bridge F1B2 - Bridge F1C Deck Road Waterproofing, Surfacing & Marking	7	02-Mar-18	09-Mar-18	Bridge F1B2 - Bridge F1C Deck Road Waterproofing, Surfacing & Marking																	
Bridge F1B1																						
1032-1740	Bridge F1B1 - Longitudinal Stitching	0	16-Dec-17 A	17-Jan-18 A	Bridge F1B1 - Longitudinal Stitching																	
1032-1780	Bridge F1B1 - Construct Int. Double Noise Encl. Bridge F1B2	30	16-Jan-18 A	27-Feb-18	Bridge F1B1 - Construct Int. Double Noise Encl. Bridge F1B2																	
1032-1800	Bridge F1B1 - Bridge F1C Deck Road Waterproofing, Surfacing & Marking	7	02-Mar-18	09-Mar-18	Bridge F1B1 - Bridge F1C Deck Road Waterproofing, Surfacing & Marking																	
Bridge F5																						
1032-4040	Cutting of Deck Between Temp. TD & E/B > Pier F5-F8	12	15-Feb-18	03-Mar-18	Cutting of Deck Between Temp. TD & E/B > Pier F5-F8																	
1032-4060	Cutting of Deck Between Temp. TD & E/B > Pier F8-F11	12	05-Mar-18	17-Mar-18	Cutting of Deck Between Temp. TD & E/B > Pier F8-F11																	
1032-4080	Cutting of Deck Between Temp. TD & E/B > Pier F11-F14	12	19-Mar-18	03-Apr-18	Cutting of Deck Between Temp. TD & E/B > Pier F11-F14																	
1032-4100	Construction Parapet (Northside) > Pier F5-F8	12	26-Feb-18	10-Mar-18	Construction Parapet (Northside) > Pier F5-F8																	
1032-4120	Construction Parapet (Northside) > Pier F8-F11	12	12-Mar-18	24-Mar-18	Construction Parapet (Northside) > Pier F8-F11																	
1032-4140	Construction Parapet (Northside) > Pier F11-F14	12	26-Mar-18	11-Apr-18	Construction Parapet (Northside) > Pier F11-F14																	
1032-4160	Construct Noise Enclosure (Northside) > Pier F5 - F8	24	12-Mar-18	11-Apr-18	Construct Noise Enclosure (Northside) > Pier F5 - F8																	
All Middle Bridge F (Common)																						
1032-4240	Fresh Water Main 150DI at Bridge F Deck	52	27-Nov-17 A	24-Mar-18	Fresh Water Main 150DI at Bridge F Deck																	
1032-4260	Bridge F Sign Gantries and Misc. Mounting Structure/Support	25	26-Dec-17 A	21-Feb-18*	Bridge F Sign Gantries and Misc. Mounting Structure/Support																	
1032-4356	Sign Gantry (DS06B,DS06A & FADS06) (Nighth work)	50	22-Feb-18	24-Apr-18	Sign Gantry (DS06B,DS06A & FADS06) (Nighth work)																	

█ Remaining Level of Effort █ Remaining Work
█ Actual Level of Effort █ Critical Remaining Work
█ Actual Work ◆ Milestone

Contract HY/2009/19
Three Months Rolling Programme (20.Jan.2018 to 19.Apr.2018)

Activity ID	Activity Name	Rem Dur	Start	Finish	2018																	
					January					February					March				April			
					21	28	04	11	18	25	04	11	18	25	01	08	15	22	29			
Wall - Lower Portion																						
A1160	Remove S3 and S4 Strut + Waling	2	30-Jan-18	31-Jan-18	■ Remove S3 and S4 Strut + Waling																	
A1170	Erect Working Platform and Rebar Fixing	2	01-Feb-18	02-Feb-18	■ Erect Working Platform and Rebar Fixing																	
A1180	Erect and Formwork	3	03-Feb-18	06-Feb-18	■ Erect and Formwork																	
A1190	Concreting	1	07-Feb-18	07-Feb-18	■ Concreting																	
A1200	Vertical Water Proofing	1	08-Feb-18	08-Feb-18	■ Vertical Water Proofing																	
A1210	Backfilling	3	09-Feb-18	12-Feb-18	■ Backfilling																	
Wall - Upper Portion																						
A1220	Remove S1 and S2 Strut + Waling	2	13-Feb-18	14-Feb-18	■ Remove S1 and S2 Strut + Waling																	
A1230	Erect Working Platform and Rebar Fixing	3	15-Feb-18	21-Feb-18	■ Erect Working Platform and Rebar Fixing																	
A1240	Erect and Formwork	3	22-Feb-18	24-Feb-18	■ Erect and Formwork																	
A1250	Concreting	1	26-Feb-18	26-Feb-18	■ Concreting																	
A1260	Vertical Water Proofing	1	27-Feb-18	27-Feb-18	■ Vertical Water Proofing																	
Bay 2																						
Wall - Lower Portion																						
A1320	Remove S3 and S4 Strut + Waling	2	27-Jan-18	29-Jan-18	■ Remove S3 and S4 Strut + Waling																	
A1330	Erect Working Platform and Rebar Fixing	2	30-Jan-18	31-Jan-18	■ Erect Working Platform and Rebar Fixing																	
A1340	Erect and Formwork	3	01-Feb-18	03-Feb-18	■ Erect and Formwork																	
A1350	Concreting	1	05-Feb-18	05-Feb-18	■ Concreting																	
A1360	Vertical Water Proofing	1	06-Feb-18	06-Feb-18	■ Vertical Water Proofing																	
A1370	Backfilling	3	07-Feb-18	09-Feb-18	■ Backfilling																	
Wall - Upper Portion																						
A1380	Remove S1 and S2 Strut + Waling	2	10-Feb-18	12-Feb-18	■ Remove S1 and S2 Strut + Waling																	
A1390	Erect Working Platform and Rebar Fixing	3	13-Feb-18	15-Feb-18	■ Erect Working Platform and Rebar Fixing																	
A1400	Erect and Formwork	3	20-Feb-18	22-Feb-18	■ Erect and Formwork																	
A1410	Concreting	1	23-Feb-18	23-Feb-18	■ Concreting																	
A1420	Vertical Water Proofing	1	24-Feb-18	24-Feb-18	■ Vertical Water Proofing																	
Bay 3																						
Wall - Lower Portion																						
A1480	Remove S3 and S4 Strut + Waling	2	25-Jan-18	26-Jan-18	■ Remove S3 and S4 Strut + Waling																	
A1490	Erect Working Platform and Rebar Fixing	2	27-Jan-18	29-Jan-18	■ Erect Working Platform and Rebar Fixing																	
A1500	Erect and Formwork	3	30-Jan-18	01-Feb-18	■ Erect and Formwork																	
A1510	Concreting	1	02-Feb-18	02-Feb-18	■ Concreting																	
A1520	Vertical Water Proofing	1	03-Feb-18	03-Feb-18	■ Vertical Water Proofing																	
A1530	Backfilling	3	05-Feb-18	07-Feb-18	■ Backfilling																	
Wall - Upper Portion																						
A1540	Remove S1 and S2 Strut + Waling	2	08-Feb-18	09-Feb-18	■ Remove S1 and S2 Strut + Waling																	

Remaining Level of Effort Remaining Work
 Actual Level of Effort Critical Remaining Work
 Actual Work Milestone

Contract HY/2009/19
Three Months Rolling Programme (20.Jan.2018 to 19.Apr.2018)

Activity ID	Activity Name	Rem Dur	Start	Finish	2018													
					March						April				May			
					18	25	04	11	18	25	01	08	15	22	29	06	13	20
3MRP (Feb 2018 - May 2018)																		
10 - SECTION X OF THE WORKS																		
10.3 - Middle Bridge (Bridge F)																		
10.3.2 - Bridge Construction																		
Bridge F3B																		
1032-2564	Divert 2 Lane Traffic (Stage 2)	0	25-Feb-18*		◆ Divert 2 Lane Traffic (Stage 2)													
Bridge F1B2																		
1032-3880	Bridge F1B2 - Construct Int. Double Noise Encl. Bridge F1B2	8	13-Jan-18 A	28-Feb-18	■ Bridge F1B2 - Construct Int. Double Noise Encl. Bridge F1B2													
1032-3900	Bridge F1B2 - Bridge F1C Deck Road Waterproofing, Surfacing & Marking	7	01-Mar-18	08-Mar-18	■ Bridge F1B2 - Bridge F1C Deck Road Waterproofing, Surfacing & Marking													
Bridge F1B1																		
1032-1780	Bridge F1B1 - Construct Int. Double Noise Encl. Bridge F1B2	15	16-Jan-18 A	08-Mar-18	■ Bridge F1B1 - Construct Int. Double Noise Encl. Bridge F1B2													
1032-1800	Bridge F1B1 - Bridge F1C Deck Road Waterproofing, Surfacing & Marking	7	09-Mar-18	16-Mar-18	■ Bridge F1B1 - Bridge F1C Deck Road Waterproofing, Surfacing & Marking													
Bridge F5																		
1032-4040	Cutting of Deck Between Temp. TD & E/B > Pier F5-F8	12	26-Feb-18	10-Mar-18	■ Cutting of Deck Between Temp. TD & E/B > Pier F5-F8													
1032-4060	Cutting of Deck Between Temp. TD & E/B > Pier F8-F11	12	12-Mar-18	24-Mar-18	■ Cutting of Deck Between Temp. TD & E/B > Pier F8-F11													
1032-4080	Cutting of Deck Between Temp. TD & E/B > Pier F11-F14	12	26-Mar-18	11-Apr-18	■ Cutting of Deck Between Temp. TD & E/B > Pier F11-F14													
1032-4100	Construction Parapet (Northside) > Pier F5-F8	12	05-Mar-18	17-Mar-18	■ Construction Parapet (Northside) > Pier F5-F8													
1032-4120	Construction Parapet (Northside) > Pier F8-F11	12	19-Mar-18	03-Apr-18	■ Construction Parapet (Northside) > Pier F8-F11													
1032-4140	Construction Parapet (Northside) > Pier F11-F14	12	04-Apr-18	18-Apr-18	■ Construction Parapet (Northside) > Pier F11-F14													
1032-4160	Construct Noise Enclosure (Northside) > Pier F5 - F8	24	19-Mar-18	18-Apr-18	■ Construct Noise Enclosure (Northside) > Pier F5 - F8													
1032-4180	Reinstate Deck Pier F8 - F14 (Northside) > Surfacing & Marking	5	19-Apr-18	24-Apr-18	■ Reinstate Deck Pier F8 - F14 (Northside) > Surfacing & Marking													
1032-4200	Reinstate Deck Pier F5 - F8 (Northside) > Surfacing & Marking	5	25-Apr-18	30-Apr-18	■ Reinstate Deck Pier F5 - F8 (Northside) > Surfacing & Marking													
All Middle Bridge F (Common)																		
1032-4240	Fresh Water Main 150DI at Bridge F Deck	39	27-Nov-17 A	09-Apr-18	■ Fresh Water Main 150DI at Bridge F Deck													
1032-4260	Bridge F Sign Gantries and Misc. Mounting Structure/Support	2	26-Dec-17 A	21-Feb-18*	■ Bridge F Sign Gantries and Misc. Mounting Structure/Support													
1032-4356	Sign Gantry (DS06B,DS06A & FADS06) (Nigth work)	50	22-Feb-18	24-Apr-18	■ Sign Gantry (DS06B,DS06A & FADS06) (Nigth work)													
10.5 - Temporary Bridge																		
10.5.3 - Temporary Bridge 'TD'																		
1053-1140	Demolition of Temporary Bridge "TD" at VI	32	19-Mar-18	27-Apr-18	■ Demolition of Temporary Bridge "TD" at VI													
10.6 - Tunnel Approach Ramp																		
10.6.1 - Approach Ramp (Excluding Portion IIB)																		
Retaining Walls & Trough Structure B,C & D																		
1061-6860	Construct Retaining Wall E Pile Cap (7 nos)	45	06-Mar-17 A	16-Apr-18	■ Construct Retaining Wall E Pile Cap (7 nos)													
1061-6900	Construct Retaining Wall E1 (Ch 5332 - 5371)	18	17-Apr-18	08-May-18	■ Construct Retaining Wall E1 (Ch 5332 - 5371)													
1061-6989	Parapet at Wall above Retaining Wall E2	14	12-Mar-18	27-Mar-18	■ Parapet at Wall above Retaining Wall E2													
1061-6990	Parapet at Wall above Retaining Wall E1	18	09-May-18	29-May-18	■ Parapet at Wall above Retaining Wall E1													
1061-7020	Falseworks System for Landscape Deck	18	29-Jan-18 A	12-Mar-18	■ Falseworks System for Landscape Deck													
1061-7040	Excavate for Foundation of Retaing Wall D	7	13-Mar-18	20-Mar-18	■ Excavate for Foundation of Retaing Wall D													
1061-7060	Construct Retaining Wall D Footing (Ch 190 - 170)	18	21-Mar-18	13-Apr-18	■ Construct Retaining Wall D Footing (Ch 190 - 170)													

■ Remaining Level of Effort ■ Remaining Work
■ Actual Level of Effort ■ Critical Remaining Work
■ Actual Work ◆ Milestone

Contract HY/2009/19
Three Months Rolling Programme (20.Feb.2018 to 19.May.2018)

Activity ID	Activity Name	Original Duration	Start	Finish	2017			2018
					Oct	Nov	Dec	Jan
Total		112d	30-Jul-17 A	08-Feb-18				
Combine Programme - IEC, Marine, External Works (2017-10-26)		112d	30-Jul-17 A	08-Feb-18				
External Works		112d	30-Jul-17 A	08-Feb-18				
Zone 1		60d	30-Jul-17 A	21-Dec-17				
EXW_1010	Rockfill for retaining wall RW8E	9d	23-Oct-17	02-Nov-17				
Sub-soil Drain & Catch Pit Connection for Retianing Wall RW8E								
EXW_1050	Drawings confirmation, reconstruction of 1 existing catchpit and 1 addition catchpit	7d	20-Oct-17 A	27-Oct-17				
EXW_1060	2 catchpits on hold due to the revised drainage alignment after MH2-74	1d	30-Oct-17	30-Oct-17				
Drainage Alignment Confirmation for MH72, 73, 74 due to Tree T1106								
EXW_1120	Construction of MH2-73,MH2-73A, MH2-74 and the associated drainage works	28d	15-Sep-17 A	19-Oct-17 A				
EXW_1130	New sketches received for addition manhole MH2-74	1d	26-Sep-17 A	26-Sep-17 A				
Works under this Section can be started unless Drainage & Sub-soil Problem are Resolved & Work Done								
EXW_1470	Watermain pipes connection to existing water valves	20d	23-Oct-17	15-Nov-17				
EXW_1150	TCSS (2 nos. drawpits and ductings)	10d	30-Oct-17	09-Nov-17				
EXW_1480	Paving carriageway	10d	07-Nov-17	17-Nov-17				
EXW_1490	Reinstatement of footpath	15d	07-Nov-17	23-Nov-17				
EXW_1500	Construction of 8 nos. of removable bollards, AECOM letter ref. no. (CWB/HY/2010/08)/M25/220/08B0	15d	18-Nov-17	05-Dec-17				
EXW_1510	Kerb & railing works	14d	06-Dec-17	21-Dec-17				
Othe Works not Affected by Drainage Works								
EXW_1520	Fabrication of parapet	60d	30-Jul-17 A	03-Oct-17 A				
EXW_1530	Parapet for retaining wall RW8D	20d	20-Oct-17 A	11-Nov-17				
EXW_1550	OHVD footing and poles in traffic island (1 no.)	14d	30-Oct-17*	14-Nov-17				
EXW_1560	CCTV (5m) footing, kiosk & earth pit	7d	30-Oct-17	06-Nov-17				
EXW_1570	TCSS (6 nos. of draw pits and ductings)	15d	07-Nov-17	23-Nov-17				
EXW_1540	Installation of directional sign DS16 steel frame	5d	13-Nov-17	17-Nov-17				
Zone 2		62d	15-Aug-17 A	05-Dec-17				
EXW_1770	Subbase and kerb laying works	20d	19-Sep-17 A	13-Oct-17 A				
EXW_1780	Preparation works for gate 7A relocation	5d	14-Oct-17 A	19-Oct-17 A				
EXW_1850	Temporary connection of watermain to the existing DAV (1 no. DAV. Pipe) and testing	20d	16-Oct-17 A	08-Nov-17				
EXW_1790	Gate 7A 1st relocation to maintain access to tunnel	1d	20-Oct-17 A	20-Oct-17 A				
EXW_1810	Parapet for retaining wall RW8C	25d	20-Oct-17 A	18-Nov-17				
EXW_1820	VMS6 steel frame at verge (fabrication completed, pending for installation)	20d	20-Oct-17 A	13-Nov-17				
EXW_1830	FVMSH3 sign gantry (fabrication completed, pending for installation)	7d	20-Oct-17 A	27-Oct-17				
EXW_1870	Boundary fence trial panel installation	5d	25-Oct-17*	31-Oct-17				
EXW_1890	Irrigation system construction	15d	25-Oct-17*	11-Nov-17				
EXW_1880	Boundary fence Installation	30d	01-Nov-17	05-Dec-17				
EXW_1840	CCTV (15m) earth pit	8d	14-Nov-17	22-Nov-17				
Revised LCS Sign Gantry Footing & Steel Frame								
Steel Frame for LCS Sign Gantry								
EXW_1730	Fabrication of LCS sign gantry	60d	15-Aug-17 A	23-Oct-17				
EXW_1740	Delivery for installation of LCS sign gantry	10d	24-Oct-17	04-Nov-17				
Zone 3		84d	15-Sep-17 A	14-Jan-18				
EXW_1980	Boundary fence wall	40d	15-Sep-17 A	03-Nov-17				

- █ Actual Work
- █ Remaining Work
- █ Critical Remaining Work
- ◆ Milestone

Date	Revision	Checked	Approved
23-Oct-17	DWP-08 (1) - 3 Months Rolling	TL	TL

Activity ID	Activity Name	Original Duration	Start	Finish	2017				2018
					Oct	Nov	Dec	Jan	
EXW_2000	Connection of E&M and TCSS ducts in zone 3	10d	25-Sep-17 A	07-Oct-17 A	Connection of E&M and TCSS ducts in zone 3				
EXW_1990	Demolition of old DS17 footing	7d	21-Oct-17 A	30-Oct-17	Demolition of old DS17 footing				
Traffic Island		84d	21-Oct-17 A	14-Jan-18					
EXW_2010	SCP4 substructure (footing and mass concrete) construction by LJV	7d	21-Oct-17 A	30-Oct-17	SCP4 substructure (footing and mass concrete) construction by LJV				
EXW_2030	TTM commencement for Traffic Island	1d	31-Oct-17	31-Oct-17	TTM commencement for Traffic Island				
EXW_2040	Reconstruction of new DS17 footing	14d	01-Nov-17	16-Nov-17	Reconstruction of new DS17 footing				
EXW_2050	Directional sign DS17 steel frame	7d	17-Nov-17	24-Nov-17	Directional sign DS17 steel frame				
EXW_2060	New VMS6 steel frame	7d	25-Nov-17	02-Dec-17	New VMS6 steel frame				
EXW_2070	TCSS and lighting at island	7d	04-Dec-17	11-Dec-17	TCSS and lighting at island				
EXW_2080	JTIS (3 nos. footings, 1 no. concrete plinth)	14d	12-Dec-17	29-Dec-17	JTIS (3 nos. footings, 1 no. concrete plinth)				
EXW_2090	Storm drainage and gully at island	12d	30-Dec-17	13-Jan-18	Storm drainage and gully at island				
EXW_2100	Kerb for island	6d	30-Dec-17	06-Jan-18	Kerb for island				
EXW_2110	Pavement works of carriageway	6d	08-Jan-18	13-Jan-18	Pavement works of carriageway				
EXW_2120	Allocation of traffic island area to LJV for SCP4 superstructure construction	1d	14-Jan-18	14-Jan-18	Allocation of traffic island area to LJV for SCP4 superstructure construction				
Nursery Compound		74d	23-Sep-17 A	20-Jan-18					
EXW_2140	Metal works and cat ladder works	10d	23-Sep-17 A	06-Oct-17 A	Metal works and cat ladder works				
EXW_2150	Fire services (procurement and installation)	60d	23-Sep-17 A	05-Dec-17	Fire services (procurement and installation)				
EXW_2160	Floor waterproofing	10d	23-Sep-17 A	06-Oct-17 A	Floor waterproofing				
EXW_2170	Procurement, plumbing and sanitary services	45d	23-Sep-17 A	17-Nov-17	Procurement, plumbing and sanitary services				
EXW_2180	Electricity connection works and lighting	30d	23-Sep-17 A	31-Oct-17	Electricity connection works and lighting				
Associated Works in planting Area of Nursery Compound		74d	06-Oct-17 A	20-Jan-18					
EXW_2190	Confirmation of possible tree fell of the three retained trees T267,T268,T269 by VPMO and LCSD	1d	06-Oct-17 A	06-Oct-17 A	Confirmation of possible tree fell of the three retained trees T267,T268,T269 by VPMO and LCSD				
EXW_2200	Waterworks (FS Fresh and Salt Water, Fresh Water) and Irrigation System	15d	07-Oct-17 A	24-Oct-17	Waterworks (FS Fresh and Salt Water, Fresh Water) and Irrigation System				
EXW_2210	Drainage works	15d	25-Oct-17	11-Nov-17	Drainage works				
EXW_2230	Addition swan neck fire hydrant to be constructed for nursery compound	15d	25-Oct-17	11-Nov-17	Addition swan neck fire hydrant to be constructed for nursery compound				
EXW_2220	Reinstatement of existing boundary fence wall around nursery compound	44d	13-Nov-17	05-Jan-18	Reinstatement of existing boundary fence wall around nursery compound				
EXW_2240	EVA	13d	06-Jan-18	20-Jan-18	EVA				
Zone 4 up to Elderly Facilities		90d	30-Aug-17 A	08-Feb-18					
Elderly Facilities V/039 Received on 22 Jun 2017		87d	18-Sep-17 A	05-Feb-18					
EXW_2260	Confirmation with LCSD	30d	18-Sep-17 A	24-Oct-17	Confirmation with LCSD				
EXW_2270	Facilities fabrication	59d	25-Oct-17	05-Jan-18	Facilities fabrication				
EXW_2280	Ground levelling, drainage works and safety met installation	26d	06-Jan-18	05-Feb-18	Ground levelling, drainage works and safety met installation				
Additional Walkway & Arbour V/040 Received on 22 Aug 2017		90d	30-Aug-17 A	08-Feb-18					
EXW_2290	Subletting	30d	30-Aug-17 A	04-Oct-17 A	Subletting				
EXW_2300	Arbour confirmation and fabrication	60d	06-Oct-17 A	15-Dec-17	Arbour confirmation and fabrication				
EXW_2310	Associated drainage works for the walkway	18d	16-Dec-17	09-Jan-18	Associated drainage works for the walkway				
EXW_2320	Arbour installation and walkway construction	26d	10-Jan-18	08-Feb-18	Arbour installation and walkway construction				
SR8 Tunnel		30d	23-Aug-17 A	17-Nov-17					
Zone A		30d	23-Aug-17 A	20-Oct-17 A					
Construction of Additional 8 nos. of Draw Pits for Road Lighting		15d	08-Sep-17 A	25-Sep-17 A					
EXW_2390	Construction of drawpits and ductings	15d	08-Sep-17 A	25-Sep-17 A	Construction of drawpits and ductings				
Installation of Precast Concrete Covers for Cable Trough		30d	23-Aug-17 A	20-Oct-17 A					
EXW_2440	Fabrication of precast concrete cover	30d	23-Aug-17 A	26-Sep-17 A	Fabrication of precast concrete cover				
EXW_2910	Installation of precast concrete cover	20d	26-Sep-17 A	20-Oct-17 A	Installation of precast concrete cover				

Activity ID	Activity Name	Original Duration	Start	Finish	2017				2018	
					Oct	Nov	Dec	Jan		
Zone B										
Pump Sump E										
EXW_2480	Cat ladder installation (5 nos.)	20d	15-Sep-17 A	10-Oct-17 A	■					
EXW_2490	Cover installation (5 nos.)	10d	11-Oct-17 A	21-Oct-17 A	■					
Pump Sump E Hand Rail										
EXW_2530	Installation of handrail (agreed with CC contract)	7d	23-Oct-17 A	31-Oct-17		■				
Egress Passage										
EXW_2550	Railing installation (2 nos. - 10m)	15d	01-Nov-17	17-Nov-17			■			
Installation of Precast Concrete Covers for Cable Trough										
EXW_2570	Installation of precast concrete cover (agreed with CC contract)	15d	01-Nov-17	17-Nov-17			■			
SR8 - C6 Stitching Structure Construction										
Base Slab Construction										
EXW_2770	Shuffle the vehicular access	5d	21-Sep-17 A	26-Sep-17 A	■					
EXW_2780	Construction of 2nd portion base slab	7d	23-Oct-17	31-Oct-17		■				
SR8 - Rotational Joint Installation										
EXW_2840	Omega seal installation (by specialist subcontractor Atlas)	21d	08-Sep-17 A	03-Oct-17 A	■					
EXW_2880	Tentative water recharge date in base slab C6 (Date of first vertical cut: 10/10/2017)	1d	10-Oct-17 A	10-Oct-17 A	■					
Proprietary Cantilever Teeth Expansion Joint Installation for Base Slab (by Freyssinet)										
EXW_2850	Procurement (2 months)	60d	30-Aug-17 A	10-Nov-17	■	■				
EXW_2860	Installation (TBC in coordination with bituminous works of LJV)	14d	11-Nov-17	27-Nov-17		■				
EXW_2870	Steel protection	14d	28-Nov-17	13-Dec-17			■			
Levelling of Base Slab (To be Agreed with LJV)										
EXW_2900	Leveling of Base Slab (To be agreed with LJV)	15d	28-Nov-17	14-Dec-17			■			
Marine Works										
SR8 -2-West (W4D8 to W4D11, W3D5 to W3D7)										
MW_1190	Horizontal cut at Panel W4D8-W4D11, W3D5-W3D7 (28 nos.)	5d	20-Sep-17 A	24-Sep-17 A	■					
Stage 1 - Footpath Diversion (West Side)										
MW_1230	Stage 1-Diversion of Footpath (West Side)	1d	24-Sep-17 A	24-Sep-17 A	■					
MW_1240	Removal of temporary footpath	8d	01-Oct-17 A	08-Oct-17 A	■					
Works above Zone C - Bay C6										
MW_1250	Mobilization of backhoe	1d	01-Oct-17 A	01-Oct-17 A	■					
MW_1260	Backfill G400 rock for reinstatement of sloping seawall	5d	02-Oct-17 A	06-Oct-17 A	■					
MW_1280	Break and remove re-prop wall	6d	07-Oct-17 A	12-Oct-17 A	■					
MW_1290	Backfill G200 & G400 rock to final profile	4d	13-Oct-17 A	16-Oct-17 A	■					
Removal of D-wall at Landing Step of Existing Vertical Seawall (W4D13, 14)										
MW_1300	Temporary fill upto +0.00mPD for working platform	2d	17-Oct-17 A	18-Oct-17 A	■					
MW_1310	Break and remove D-wall W4D13 & 14 to +1.5mPD	8d	23-Oct-17	30-Oct-17	■					
MW_1320	Break and remove D-wall at Panel W4D13 sea side to -2.0mPD	4d	31-Oct-17	03-Nov-17	■					
MW_1330	Install basket for D-wall cut hole	3d	04-Nov-17	06-Nov-17			■			
Reinstatement of Vertical Seawall										
MW_1340	Excavate the formation level at end of Panel W4D14	1d	04-Nov-17	04-Nov-17			■			
MW_1350	Erect formwork at end of Panel W4D14	2d	05-Nov-17	06-Nov-17			■			
MW_1360	Pour mass concrete at end of Panel W4D14	1d	07-Nov-17	07-Nov-17			■			
MW_1370	Remove formworks	1d	08-Nov-17	08-Nov-17			■			

Activity ID	Activity Name	Original Duration	Start	Finish	2017				2018
					Oct	Nov	Dec	Jan	
MW_1380	Install granite facing stone 1st layer	2d	09-Nov-17	10-Nov-17		■ Install granite facing stone 1st layer			
MW_1390	Pour concrete behind 1st layer of facing stone	1d	11-Nov-17	11-Nov-17		■ Pour concrete behind 1st layer of facing stone			
Stage 2 - Footpath Diversion (East Side)		8d	24-Oct-17	31-Oct-17					
MW_1400	Stage 2-Diversion of Footpath (East Side)	1d	24-Oct-17*	24-Oct-17		■ Stage 2-Diversion of Footpath (East Side)			
MW_1410	Remove temp. footpath & break footpath footing	7d	25-Oct-17	31-Oct-17		■ Remove temp. footpath & break footpath footing			
Removal of Pipe Pile Wall		18d	01-Nov-17	18-Nov-17					
MW_1420	Break the mass concrete at end of Bay 1 adjacent to land side	3d	01-Nov-17	03-Nov-17		■ Break the mass concrete at end of Bay 1 adjacent to land side			
MW_1430	Remove filled materials behind seawall bay 1 to +1.00mPD	3d	04-Nov-17	06-Nov-17		■ Remove filled materials behind seawall bay 1 to +1.00mPD			
MW_1440	Cut and remove the pipe pile wall	7d	12-Nov-17	18-Nov-17		■ Cut and remove the pipe pile wall			
Cut Remaining d-wall (W4D12, W4D15 to 16)		17d	19-Nov-17	05-Dec-17					
MW_1470	Remove remaining filled materials behind Bay 1	3d	19-Nov-17	21-Nov-17		■ Remove remaining filled materials behind Bay 1			
MW_1480	Remove half of seawall blocks at Bay 1 (80os.)	2d	22-Nov-17	23-Nov-17		■ Remove half of seawall blocks at Bay 1 (80os.)			
MW_1490	Vertical cut at W3D8-11, W4D12, W4D15-16 (14 nos.)	5d	24-Nov-17	28-Nov-17		■ Vertical cut at W3D8-11, W4D12, W4D15-16 (14 nos.)			
MW_1500	Horizontal cut at W3D8-11, W4D12, W4D15-16 (20 nos.)	5d	29-Nov-17	03-Dec-17		■ Horizontal cut at W3D8-11, W4D12, W4D15-16 (20 nos.)			
MW_1510	Remove remaining seawall blocks at Bay 1 (100 nos.)	2d	04-Dec-17	05-Dec-17		■ Remove remaining seawall blocks at Bay 1 (100 nos.)			
Removal of Sheet Pile Wall		3d	06-Dec-17	08-Dec-17					
MW_1520	Removal of Sheet Pile Wall	3d	06-Dec-17	08-Dec-17		■ Removal of Sheet Pile Wall			
Stage 3 - Diversion of Victoria Park Road		1d	15-Nov-17	15-Nov-17					
MW_1530	Stage 3 - Diversion of Victoria Road	1d	15-Nov-17*	15-Nov-17		■ Stage 3 - Diversion of Victoria Road			
Reinstatement of Remaining Vertical Seawall by Land Plants		35d	16-Nov-17	20-Dec-17					
MW_1540	Install granite facing stone 2nd layer	2d	16-Nov-17	17-Nov-17		■ Install granite facing stone 2nd layer			
MW_1550	Pour concrete behind 2nd layer of facing stone	1d	18-Nov-17	18-Nov-17		■ Pour concrete behind 2nd layer of facing stone			
MW_1560	Install granite facing stone 3rd layer	2d	19-Nov-17	20-Nov-17		■ Install granite facing stone 3rd layer			
MW_1570	Pour concrete behind 3rd layer of facing stone	1d	21-Nov-17	21-Nov-17		■ Pour concrete behind 3rd layer of facing stone			
MW_1580	Install granite facing stone 4th layer	2d	22-Nov-17	23-Nov-17		■ Install granite facing stone 4th layer			
MW_1590	Pour concrete behind 4th layer of facing stone	1d	24-Nov-17	24-Nov-17		■ Pour concrete behind 4th layer of facing stone			
MW_1600	Install granite facing stone 5th layer	2d	25-Nov-17	26-Nov-17		■ Install granite facing stone 5th layer			
MW_1610	Pour concrete behind 5th layer of facing stone	1d	27-Nov-17	27-Nov-17		■ Pour concrete behind 5th layer of facing stone			
MW_1620	Break the damage coping concrete	2d	28-Nov-17	29-Nov-17		■ Break the damage coping concrete			
MW_1630	Erect Formwork for coping	3d	30-Nov-17	02-Dec-17		■ Erect Formwork for coping			
MW_1640	Pour concrete for coping	1d	03-Dec-17	03-Dec-17		■ Pour concrete for coping			
MW_1650	Backfill up to formation level (6 layers)	13d	04-Dec-17	16-Dec-17		■ Backfill up to formation level (6 layers)			
MW_1660	Lay footpath paving blocks	4d	17-Dec-17	20-Dec-17		■ Lay footpath paving blocks			

Activity ID	Activity Name	Original Duration	Start	Finish	2017												2018
					Oct			Nov			Dec			Jan			
Total		306d	15-May-17 A	16-Mar-18													
3 Months Rolling Programme - 2017-09 (DWP-08, 1st submission)		306d	15-May-17 A	16-Mar-18													
Removal of TS3 South side		306d	15-May-17 A	16-Mar-18													
South West (Zone A)		78d	17-May-17 A	16-Sep-17 A													
1	South West (Zone A)	66d	17-May-17 A	16-Sep-17 A	South West (Zone A)												
2	Remove filled material to -4.35mPD (13,000m3)	13d	17-May-17 A	01-Jun-17 A													
3	Remove seawall blocks at Bay Z4- 22 - 22 (400 nos.)	6d	19-May-17 A	26-May-17 A													
5	Core D-wall cut holes at Panel W2D5 to W2D8	6d	27-Jun-17 A	02-Jul-17 A													
6	Remove filled material to -7.0mPD up to Panel W2D8	7d	03-Jul-17 A	14-Jul-17 A													
4	Remove seawall blocks at Bay 23 & 24 (120 nos.)	2d	11-Aug-17 A	15-Aug-17 A													
54	Remove Outfall Q Sheet Piles Wall	14d	18-Aug-17 A	16-Sep-17 A	Remove Outfall Q Sheet Piles Wall												
Portion SW1		15d	12-Jun-17 A	14-Jul-17 A													
7	Vertical cut at Panel BWD14 to SA7 (25 nos./1.5m)	8d	12-Jun-17 A	30-Jun-17 A													
8	Horizontal cut at Panel BWD14 to SA7 (34 nos./1.5m)	9d	29-Jun-17 A	14-Jul-17 A													
Portion SW2		18d	19-Jul-17 A	04-Aug-17 A													
59	Vertical cut at Panel W2D1 to W2D9 (24 nos./1.5m)	9d	19-Jul-17 A	27-Jul-17 A													
69	Horizontal cut at Panel W2D1 to W2D9 (32 nos./1.5m)	9d	28-Jul-17 A	04-Aug-17 A													
South West (Zone B)		34d	22-Jun-17 A	25-Jul-17 A													
10	Excavation to Expose Existing Landing Steps	6d	22-Jun-17 A	27-Jun-17 A													
11	Excavation to Expose Existing Intake of Windsor House	5d	28-Jun-17 A	02-Jul-17 A													
12	Clear Up for Inspection of Existing Intake of Windsor House	7d	03-Jul-17 A	09-Jul-17 A													
13	Remove Filled Material to -4.35mPD (11,000m3)	18d	03-Jul-17 A	20-Jul-17 A													
14	Remove Filled Material to -7.0mPD	6d	18-Jul-17 A	23-Jul-17 A													
15	Core D-wall Cut Holes at Panel W2D10 to W4D3 (82 nos.)	2d	24-Jul-17 A	25-Jul-17 A													
South East (Zone C)		126d	24-May-17 A	24-Oct-17													
16	South East (Zone C)	105d	24-May-17 A	24-Oct-17	South East (Zone C)												
17	Break concrete slab	2d	24-May-17 A	25-May-17 A													
18	Remove filled material to -4.35mPD (7,000m3)	8d	26-May-17 A	12-Jun-17 A													
19	Remove seawall blocks at Bay 2 - Bay 4 (454 nos.)	7d	13-Jun-17 A	19-Jun-17 A													
Portion SE1		35d	24-Jun-17 A	28-Jul-17 A													
20	Remove filled material to -7.0mPD	7d	24-Jun-17 A	30-Jun-17 A													
21	Clean and Install String for Vertical Cutting	1d	01-Jul-17 A	01-Jul-17 A													
22	Vertical cut at Panel W2D32 to W2D35 (18 nos./1.5m)	7d	02-Jul-17 A	14-Jul-17 A													
23	Horizontal cut at Panel W2D32 to W2D35 (24 nos./1.5m)	12d	17-Jul-17 A	28-Jul-17 A													
Portion SE2		34d	15-Aug-17 A	06-Sep-17 A													
82	Vertical cut at Panel W2D24 to W2D31 (18 nos./1.5m)	10d	15-Aug-17 A	26-Aug-17 A	(18 nos./1.5m)												
83	Horizontal cut at Panel W2D24 to W2D31 (24 nos./1.5m)	8d	03-Sep-17 A	06-Sep-17 A	Panel W2D24 to W2D31 (24 nos./1.5m)												
SR8 (E&W)		75d	11-Aug-17 A	24-Oct-17													
A61270	Vertical cut at W4D7 to W4D11 + W3D5 to W3D7 (24 nos.)	12d	11-Aug-17 A	09-Oct-17	Vertical cut at W4D7 to W4D11 + W3D5 to W3D7 (24 nos.)												
A61230	Vertical cut at W3D2 to W3D4 (9 nos.)	3d	28-Aug-17 A	05-Sep-17 A	to W3D4 (9 nos.)												
A61250	Horizontal cut at W3D2 to W3D4 (12 nos.)	3d	06-Sep-17 A	09-Sep-17 A	at W3D2 to W3D4 (12 nos.)												
A61280	Horizontal cut at W4D7 to W4D11 + W3D5 to W3D7 (32 nos.)	15d	10-Oct-17	24-Oct-17	Horizontal cut at W4D7 to W4D11 + W3D5 to W3D7 (32 nos.)												
SR8 (West Side)		306d	15-May-17 A	16-Mar-18													

Activity ID	Activity Name	Original Duration	Start	Finish	2017				2018
					Oct	Nov	Dec	Jan	
C6 Stitching Structure Construction									
120	SR8 - C6 Stitching Structure Construction	188d	15-May-17 A	09-Nov-17	SR8 - C6 Stitching Structure Construction				
Roof slab construction									
C61000	ICE design cert submission for Engineer's consent	9d	15-May-17 A	24-May-17 A					
C61010	Erection of falsework (Revised due to rainstorm and typhoon)	22d	26-May-17 A	20-Jun-17 A					
C61020	Formwork erection and diaphragm wall C.J. and couplers preparation (coring if required)	5d	21-Jun-17 A	25-Jun-17 A					
C61030	Steel fixing for roof slab	8d	26-Jun-17 A	05-Jul-17 A					
C61040	Final cleaning and concreting	1d	06-Jul-17 A	06-Jul-17 A					
C61050	Falsework and formwork removal	6d	17-Jul-17 A	19-Jul-17 A					
OHVD construction									
C61100	Falsework modification	8d	20-Jul-17 A	27-Jul-17 A					
C61110	OHVD slab construction (box out will be formed in R.J. location)	8d	28-Jul-17 A	04-Aug-17 A					
C61120	OHVD kicker wall construction	8d	05-Aug-17 A	11-Aug-17 A					
Base slab construction									
200	Base slab construction	27d	28-Aug-17 A	17-Sep-17 A	Base slab construction				
C61060	Shuffle the vehicular access	5d	28-Aug-17 A	01-Sep-17 A					
C61070	Construction of 1st portion base slab	7d	02-Sep-17 A	08-Sep-17 A	1st portion base slab				
C61080	Shuffle the vehicular access	5d	09-Sep-17 A	13-Sep-17 A	Shuffle the vehicular access				
C61090	Construction of 2nd portion base slab	7d	14-Sep-17 A	17-Sep-17 A	Construction of 2nd portion base slab				
SR8 - Rotational Joint Installation									
Omega Seal Installation									
A62190	1st part	5d	02-Oct-17	06-Oct-17	1st part				
A62200	2nd part	5d	07-Oct-17	11-Oct-17	2nd part				
A62210	3rd part	5d	12-Oct-17	16-Oct-17	3rd part				
Proprietary Cantilever Teeth Expansion Joint Installation for Base Slab									
A62220	Procurement (5 months)	150d	22-Jun-17 A	26-Oct-17	Procurement (5 months)				
A62230	Installation	14d	27-Oct-17	09-Nov-17	Installation				
Phase I - Reinstatement of Section of Sloping Seawall above Zone C Bay C6									
Backfill Rubble Mount, Installation of Granite Stone Facing by Land Team									
Section of Sloping Seawall above Bay C6 Reinstatement									
A61050	Dismantle Reprop Wall Partially (Above Slope Sea Wall)	5d	24-Jul-17 A	07-Oct-17	Dismantle Reprop Wall Partially (Above Slope Sea Wall)				
A61040	Backfilling of Rubble Mound (Grade 200 Rock)	7d	27-Sep-17 A	28-Sep-17 A	Backfilling of Rubble Mound (Grade 200 Rock)				
A61060	Cast Kerbing Concrete	3d	08-Oct-17	10-Oct-17	Cast Kerbing Concrete				
A61070	Make good rubble mound and shotcreting	5d	11-Oct-17	15-Oct-17	Make good rubble mound and shotcreting				
A61080	Installation of Granite Stone Facing	7d	16-Oct-17	22-Oct-17	Installation of Granite Stone Facing				
Removal of Remaining Pipe Pile Wall, Sheet Pile Wall & D-wall by Marine Team									
260	Removal of Remaining Pipe Pile Wall, Sheet Pile Wall & D-wall	145d	22-Oct-17	16-Mar-18	Removal of Remaining Pipe Pile Wall, Sheet Pile Wall & D-wall				
A61100	Cut pipe pile wall at A1 - A14 (After A61090 & 25A)	15d	09-Dec-17	23-Dec-17	Cut pipe pile wall at A1 - A14				
A61110	Under water cut sheet pile wall (5 nos.)	6d	24-Dec-17	29-Dec-17	Under water cut				
A61130	Remove filled material to -4.35mPD (6,000m3)	10d	30-Dec-17	08-Jan-18					
A61140	Remove seawall blocks at Bay 1 & 2 (356nos.)	8d	09-Jan-18	16-Jan-18					
A61150	Remove filled material below cut off level 1m	5d	17-Jan-18	21-Jan-18					
A61200	Vertical cut at Panel W4D12, 15, 16 & 17 (12nos./1.5m)	4d	22-Jan-18	25-Jan-18					
A61210	Horizontal cut at W4D12, 15, 16 & 17 (16 nos./1.5m)	5d	26-Jan-18	30-Jan-18					

Activity ID	Activity Name	Original Duration	Start	Finish	2017			2018
					Oct	Nov	Dec	
A61160	Vertical cut at W3D8 to W3D10 (9 nos.)	3d	26-Jan-18	28-Jan-18				
A61170	Horizontal cut at W3D8 to W3D10 (12 nos.)	9d	31-Jan-18	08-Feb-18				
Phase II Seawall Reinstatement		38d	30-Nov-17	07-Jan-18				
36	Phase II Seawall Reinstatement	31d	30-Nov-17	07-Jan-18				
Along existing vertical seawall		12d	30-Nov-17	12-Dec-17				
37	Along existing vertical seawall	10d	30-Nov-17	12-Dec-17				
38	Vertical cut at Panel W4D13 to 14 (8 nos./1.5m)	8d	01-Dec-17	08-Dec-17				
39	Horizontal cut at W4D13 to 14 (8 nos./1.5m)	4d	09-Dec-17	12-Dec-17				
Reinstatement of Vertical Seawall		26d	13-Dec-17	07-Jan-18				
40	Reinstatement of Vertical Seawall	21d	13-Dec-17	07-Jan-18				
41	Drill hole and install dowel bar at existing vertical seawall	7d	13-Dec-17	19-Dec-17				
42	Erect steel plate for external formwork of seawall (diver works)	7d	20-Dec-17	26-Dec-17				
43	Pour tremie concrete for reinstatement of existing seawall (diver works)	2d	27-Dec-17	28-Dec-17				
44	Remove steel formworks (diver works)	2d	29-Dec-17	30-Dec-17				
45	Reinstatement granitic facing stone at vertical seawall	4d	31-Dec-17	03-Jan-18				
46	Erect formwork for seawall coping	2d	04-Jan-18	05-Jan-18				
47	Pour concrete for seawall coping	1d	06-Jan-18	06-Jan-18				
48	Remove formwork at seawall coping	1d	07-Jan-18	07-Jan-18				
TTA Revert Traffic Back to Original Alignment		177d	11-Jul-17 A	03-Jan-18				
East Bound TTA - IEC East Bound, Victoria Park Road & footpath along Sea Side		175d	11-Jul-17 A	01-Jan-18				
Stage 1 - IEC (East Bound)		89d	11-Jul-17 A	07-Oct-17				
Reinstatement Existing Structure		89d	11-Jul-17 A	07-Oct-17				
A10790	Reinstatement of Type 2 Wing Wall (20m) and Type 3 Parapet (10m)	21d	11-Jul-17 A	08-Sep-17 A				
A10800	Install metal parapet on parapet wall (30m)	6d	02-Oct-17	07-Oct-17				
Stage 2 - Victoria Park Road		69d	01-Sep-17 A	19-Nov-17				
A10930	Break flexible pavement and concrete slab above EB traffic deck	2d	01-Sep-17 A	06-Sep-17 A				
A10900	Remove flexible pavement and then break temp light weight concrete ramp (60m)	14d	08-Sep-17 A	28-Oct-17				
A10910	Construct parapet wall Type R3 (15m) and Type R2 (25m) on extg bridge	23d	09-Sep-17 A	21-Oct-17				
A10940	Dismantle traffic deck (360m2) and cut king posts (4 nos.)	5d	15-Sep-17 A	20-Sep-17 A				
A10970	Backfill Type B Material up to 2m below F.F.L.(Ave.2.6m High, 13 Layer@0.2m each layer)	6d	21-Sep-17 A	23-Sep-17 A				
A10950	Break two concrete footings for temp traffic deck	6d	26-Sep-17 A	01-Oct-17 A				
A10960	Break pipe piles (28 nos.) and cut sheet pile (60 piece)	14d	26-Sep-17 A	09-Oct-17				
A10980	Backfill General Fill Material up to Formation Level (Ave. 1.5m High, 5 Layer@ 0.3m each Layer)	9d	28-Sep-17 A	11-Oct-17				
A10990	Construct 450/300 stormwater pipe (20m/35m) with 2 Manholes and 1 gully	8d	12-Oct-17	19-Oct-17				
A11000	Remove the temp uPVC divided pipe (45m) and two Manholes	3d	20-Oct-17	22-Oct-17				
A10920	Install metal parapet on parapet wall (40m)	6d	22-Oct-17	27-Oct-17				
A11010	Reinstate the road kerb along VPR (100m)	5d	23-Oct-17	27-Oct-17				
A11020	Well compact formation level and subbase for SRT	8d	28-Oct-17	04-Nov-17				
A11030	Lay flexible road pavement (RB, BC)	3d	05-Nov-17	07-Nov-17				
A11040	Expose and Install Manhole Covers	2d	08-Nov-17	09-Nov-17				
A11050	Lay flexible road pavement (WC)	2d	10-Nov-17	11-Nov-17				
A11060	Lay road marking and erect permanent traffic signs	2d	12-Nov-17	13-Nov-17				
A11070	Implement next TTM stage 3 (VPR footpath, EB)	1d	19-Nov-17	19-Nov-17				
Stage 3 - Reinstatement of Footpath along Sea Side		43d	20-Nov-17	01-Jan-18				

Activity ID	Activity Name	Original Duration	Start	Finish	2017				2018
					Oct	Nov	Dec	Jan	
Phase 1									
A11240	Temporary Pedestrian Diversion	4d	20-Nov-17	23-Nov-17					
A11250	Break flexible pavement and concrete slab above EB traffic deck (Partially)	3d	24-Nov-17	26-Nov-17					
A11310	Temporay Relocate telecom ducts	7d	24-Nov-17	30-Nov-17					
A11260	Dismantle traffic deck (Partially) and Cut king posts	5d	27-Nov-17	01-Dec-17					
A11270	Break two concrete footings	7d	02-Dec-17	08-Dec-17					
A11280	Cut pipe piles and sheet pile	10d	02-Dec-17	11-Dec-17					
A11290	Backfill Type B Material up to 2m below F.F.L (Compaction by proof rolling method of 0.2m each layer)	6d	12-Dec-17	17-Dec-17					
A11300	Backfill General Fill Material up to Formation Level (Avg. 1.5m height, by SRT method of 0.3m each layer, 5 layers)	10d	18-Dec-17	27-Dec-17					
Phase 2 - Sloping Seawall Reinstatement									
A11320	Backfill and make good rubble mound profile	7d	01-Dec-17	07-Dec-17					
A11330	Install hand pack rubble	6d	08-Dec-17	13-Dec-17					
A11340	Erect formwork for toe berm	3d	14-Dec-17	16-Dec-17					
A11350	Concreting for toe berm	2d	17-Dec-17	18-Dec-17					
A11360	Trim the rubble mound profile	4d	19-Dec-17	22-Dec-17					
A11370	Shotcreting on the rubble mound	2d	23-Dec-17	24-Dec-17					
A11380	Erect formwork for intermediate berms	7d	25-Dec-17	31-Dec-17					
A11390	Concreting for intermediate berms	1d	01-Jan-18	01-Jan-18					
West Bound - IEC West Bound & Tsing fung Street									
Stage 2 - Tsing Fung Street									
A11140	Remove flexible pavement and then break temp light weight concrete ramp (60m)	10d	07-Aug-17 A	09-Oct-17					
A11150	Construct parapet wall Type R2 (18m) and Type R1 (42m) on existing bridge	42d	11-Sep-17 A	20-Nov-17					
A11090	Dismantle traffic deck (300m2) and cut king posts (4 nos.)	5d	20-Sep-17 A	26-Sep-17 A					
A11100	Backfill Type B Material up to 2m below F.F.L (Ave. 2.6m High, 13 Layer @ 0.2m each Layer)	6d	27-Sep-17 A	28-Sep-17 A					
A11110	Backfill General Fill Material up to Formation Level (Ave. 1.5m High, 5 Layer @ 0.3m each Layer)	15d	29-Sep-17 A	04-Oct-17					
A11120	Break pipe piles (28 nos.) and cut sheet pile (60 piece)	10d	29-Sep-17 A	30-Sep-17 A					
A11130	Break two concrete footings for temp traffic deck	6d	01-Oct-17 A	06-Oct-17					
A11170	Relay new 400 diameter PE pipe under slow lane of TFS by HKCG (4+21)	25d	07-Oct-17	31-Oct-17					
A11180	Lay cross road duct for permanent lighting	3d	01-Nov-17	03-Nov-17					
A11190	Reinstate the Road Kerb along TFS (100m)	6d	04-Nov-17	09-Nov-17					
A11200	Well compact formation level and subbase for SRT	8d	10-Nov-17	17-Nov-17					
A11210	Lay flexible road pavement (RB, BC, WC)	7d	18-Nov-17	24-Nov-17					
A11160	Install metal parapet on parapet wall (60m)	6d	21-Nov-17	26-Nov-17					
A11220	Lay road marking and erect permanent traffic signs	2d	25-Nov-17	26-Nov-17					
A11230	Final cleaning for implement next TTM stage 3 (Victoria Park, WB)	1d	03-Dec-17	03-Dec-17					
Stage 3A - Removal of Temporary Traffic Deck on Diverted Tsing Fung Street & Reinstatement Works									
A11690	Break flexible pavement and concrete slab above traffic deck	3d	04-Dec-17	06-Dec-17					
A11700	Dismantle traffic deck and Cut king posts	5d	07-Dec-17	11-Dec-17					
A11710	Break two concrete footings	7d	12-Dec-17	18-Dec-17					
A11720	Cut pipe piles and sheet pile	7d	12-Dec-17	18-Dec-17					
A11730	Backfill Type B Material up to 2m below F.F.L (Compaction by proof rolling method of 0.2m each layer)	6d	19-Dec-17	24-Dec-17					
A11740	Backfill General Fill Material up to Formation Level (Avg. 1.5m height, by SRT method of 0.3m each layer, 5 layers)	10d	25-Dec-17	03-Jan-18					

Activity ID	Activity Name	Original Duration	Start	Finish	2017												2018		
					Nov						Dec						Jan		Feb
					1	2	3	4	5	6	1	2	3	4	5	6	1	2	1
Total		148d	07-Sep-17 A	02-Mar-18															
IEC Reinstatement Programme - REV-JL-01(CW Version) - Major - Minor Layout																			
Major Works for Substantial Completion of KD9 - Section 5b of Works																			
East Bound - Victoria Park Road																			
TTM Stage 2 - Revert Traffic back to Original Victoria Road																			
A1060	Removal of Pipe Pile Wall, D Wall and Sheet Pile Wall (Marine Team)	39d	25-Oct-17 A	02-Dec-17	Removal of Pipe Pile Wall, D Wall and Sheet Pile Wall (Marine Team)														
A1070	Installation of temp directional sign mounted on extg footbridge	1d	23-Dec-17	23-Dec-17	Installation of temp directional sign mounted on extg footbridge														
Existing Bridge Parapet Reinstatement																			
A1080	Construct parapet wall Type R3 (15m) and Type R2 (25m) on existing bridge	27d	07-Sep-17 A	10-Oct-17 A	Construct parapet wall Type R3 (15m) and Type R2 (25m) on existing bridge														
A1090	Install metal parapet on parapet wall (40m)	4d	13-Dec-17	16-Dec-17	Install metal parapet on parapet wall (40m)														
Removal of Light Weight Concrete Ramp																			
A1100	Erect bamboo scaffold with protection net	4d	03-Oct-17 A	07-Oct-17 A	Erect bamboo scaffold with protection net														
A1110	Remove temporary metal barrier on temporary road	4d	03-Oct-17 A	07-Oct-17 A	Remove temporary metal barrier on temporary road														
A1120	Remove flexible pavement and then break temp light weight concrete ramp (60m)	12d	03-Oct-17 A	23-Oct-17 A	Remove flexible pavement and then break temp light weight concrete ramp (60m)														
Reinstatement Works after Removal of Light Weight Concrete Ramp																			
A1130	Temporary diversions of Victoria Park Road after removing of light weight concrete ramp	2d	16-Oct-17 A	17-Oct-17 A	Temporary diversions of Victoria Park Road after removing of light weight concrete ramp														
A1140	Break up temporary asphalt pavement and cut hoarding	2d	18-Oct-17 A	19-Oct-17 A	Break up temporary asphalt pavement and cut hoarding														
A1150	Construct min. 1.5m width pedestrian footpath with concrete ramp	4d	20-Oct-17 A	23-Oct-17 A	Construct min. 1.5m width pedestrian footpath with concrete ramp														
A1160	Pedestrian Diversion of Victoria Park Road Footpath (Stage 2)	1d	24-Oct-17 A	24-Oct-17 A	Pedestrian Diversion of Victoria Park Road Footpath (Stage 2)														
Reinstatement Works within Traffic Deck																			
A1220	Break pipe piles and cut sheet pile	14d	24-Sep-17 A	09-Oct-17 A	Break pipe piles and cut sheet pile														
A1240	Dismantle 1.5m high metal barrier	2d	03-Oct-17 A	04-Oct-17 A	Dismantle 1.5m high metal barrier														
A1250	Break two concrete footings for temp traffic deck	2d	06-Oct-17 A	07-Oct-17 A	Break two concrete footings for temp traffic deck														
Drainage Works																			
A1190	Construct DN450 and DN375 stormwater pipe with 2 manholes (including removal of existing 450 concrete pipe)	4d	03-Oct-17 A	06-Nov-17	Construct DN450 and DN375 stormwater pipe with 2 manholes (including removal of existing 450 concrete pipe)														
A1170	Remove the temp uPVC divided pipe (45m) and two Manholes	2d	08-Oct-17 A	09-Oct-17 A	Remove the temp uPVC divided pipe (45m) and two Manholes														
A1180	Extend 2x225 concrete pipe with conc surround to new manhole SMH7008490 (including of water jet before extension pipes)	5d	05-Nov-17*	09-Nov-17	Extend 2x225 concrete pipe with conc surround to new manhole SMH7008490 (including of water jet before extension pipes)														
A2010	Excavate common trench and erect shoring for DN300 pipe, manholes and 400 PE pipe (including of removal extg PE pipe)	6d	07-Nov-17*	12-Nov-17	Excavate common trench and erect shoring for DN300 pipe, manholes and 400 PE pipe (including of removal extg PE pipe)														
A1185	CCTV survey of 2 existing DN225 pipeline (with water jet and within site area)	1d	10-Nov-17	10-Nov-17	CCTV survey of 2 existing DN225 pipeline (with water jet and within site area)														
A2370	Construct DN300 stormwater pipe with 2 Manholes	4d	27-Nov-17	30-Nov-17	Construct DN300 stormwater pipe with 2 Manholes														
Reinstatement of Existing Gas Main																			
A1280	Laying and connection of DN400mm gas main by HKCG	14d	13-Nov-17	26-Nov-17	Laying and connection of DN400mm gas main by HKCG														
A1270	Excavation for DN400mm Gas main outside TTA works area (night work and apply CNP and TTA)	20d	22-Nov-17 A	12-Nov-17	Excavation for DN400mm Gas main outside TTA works area (night work and apply CNP and TTA)														
Reinstatement Works of Carriageway Pavement for Stage 3 TTA																			
A1290	Backfilling common trench and then construct 5 gullies with DN150mm UPVC gully Pipes	4d	01-Dec-17	04-Dec-17	Backfilling common trench and then construct 5 gullies with DN150mm UPVC gully Pipes														
A1295	Lay cross road duct from drawpit A to VPR footpath	2d	05-Dec-17	06-Dec-17	Lay cross road duct from drawpit A to VPR footpath														
A1300	Reinstate the road kerb along VPR (70m)	4d	07-Dec-17	10-Dec-17	Reinstate the road kerb along VPR (70m)														
A1310	Well compact formation level and subbase by proof rolling method (instead of SRT)	2d	11-Dec-17	12-Dec-17	Well compact formation level and subbase by proof rolling method (instead of SRT)														
A1320	Lay flexible road pavement (RB, BC)	3d	13-Dec-17	15-Dec-17	Lay flexible road pavement (RB, BC)														
A1330	Expose and Install Manhole Covers	1d	15-Dec-17	15-Dec-17	Expose and Install Manhole Covers														
A1340	Lay flexible road pavement (PMSMA 10)	1d	16-Dec-17	16-Dec-17	Lay flexible road pavement (PMSMA 10)														
A1350	Implement next TTM stage 3 (VPR EB) with road marking	1d	17-Dec-17	17-Dec-17	Implement next TTM stage 3 (VPR EB) with road marking														
TTM Stage 3 - Reinstatement of Footpath along Seafont																			

- Actual Work
- Remaining Work
- Critical Remaining Work
- ◆ Milestone

Page 1 of 3
 Contract No. HY/2010/08: Central - Wanchai Bypass Tunnel +(Slip Road 8 Section) - 3 Months Rolling Programme

Date	Revision	Checked	Approved
23-Oct-17	DWP-08 (1) - 3 Months Rolling	TL	TL

Activity ID	Activity Name	Original Duration	Start	Finish	2017				2018					
					Nov	Dec	Jan	Feb	Jan	Feb				
A1370	Temporary Diversion of Victoria Park Road Footpath (Stage 3)	3d	17-Dec-17	19-Dec-17										
Reinstatement Works in Traffic Deck Part A		21d	20-Dec-17	09-Jan-18										
A1380	Break flexible pavement and concrete slab above EB traffic deck (Partially)	3d	20-Dec-17	22-Dec-17										
A1390	Temporary Relocate telecom ducts and water main	5d	20-Dec-17	24-Dec-17										
A1400	Dismantle traffic deck (Partially) and Cut king posts	3d	23-Dec-17	25-Dec-17										
A1410	Backfill Type B Material up to 2m below F.F.L (Compaction by proof rolling method of 0.2m each layer)	3d	26-Dec-17	28-Dec-17										
A1420	Break pipe piles and cut sheet pile	6d	29-Dec-17	03-Jan-18										
A1430	Backfill Subbase material up to Formation Level (Avg. 1.5m height, by SRT method of 0.3m each layer, 5 layers)	3d	04-Jan-18	06-Jan-18										
A1440	Break two concrete footings	2d	08-Jan-18	09-Jan-18										
Reinstatement of Existing Gas Main		17d	10-Jan-18	26-Jan-18										
A1450	Excavation for DN400mm Gas main	3d	10-Jan-18	12-Jan-18										
A1460	Laying DN400mm gas main by HKCG at VPR footpath	14d	13-Jan-18	26-Jan-18										
Reinstatement of Existing Utilities at Existing Footpath		14d	27-Jan-18	09-Feb-18										
A1470	Lower 12KV and 132 KV cables	3d	27-Jan-18	30-Jan-18										
A1480	Lay HGC, PCCW, Whart T&T and NWT telecom ducts and construct drawpits	10d	31-Jan-18	09-Feb-18										
A1500	Reinstate permanent water main	5d	31-Jan-18	04-Feb-18										
West Bound - Tsing Fung Street & Victoria Park		148d	16-Sep-17 A	02-Mar-18										
TTM Stage 2 - Revert Traffic back to Original Tsing Fung Street		65d	16-Sep-17 A	10-Dec-17										
A1850	Reinstatement Works for Traffic Diversion back to Original Tsing Fung Street	4d	05-Nov-17	08-Nov-17										
Existing Bridge Parapet Reinstatement		59d	16-Sep-17 A	03-Dec-17										
A1800	Construct parapet wall Type R2 (60m) on existing bridge	23d	16-Sep-17 A	10-Oct-17 A										
A1810	Install metal parapet on parapet wall (60m)	5d	29-Nov-17	03-Dec-17										
Removal of Light Weight Concrete Ramp		19d	08-Oct-17 A	11-Nov-17										
A1820	Erect bamboo scaffold with protection net	4d	08-Oct-17 A	11-Oct-17 A										
A1830	Remove temporary metal barrier on temporary road	4d	08-Oct-17 A	11-Nov-17 A										
A1840	Remove flexible pavement and then break temp light weight concrete ramp (60m)	14d	12-Oct-17 A	07-Nov-17										
Reinstatement Works within Traffic Deck		50d	20-Sep-17 A	07-Nov-17										
A1890	Dismantle traffic deck (300m2) and cut king posts (4 nos.)	23d	20-Sep-17 A	14-Oct-17 A										
A1900	Backfill Type B Material up to 2m below F.F.L (Avg. 2.6m height, by proof rolling method of 0.2m each layer, 13 layers)	18d	27-Sep-17 A	16-Oct-17 A										
A1910	Break pipe piles (28 nos.) and cut sheet pile (60 piece)	4d	17-Oct-17 A	20-Oct-17 A										
A1920	Backfill subbase material up to Formation Level (Avg. 1.5m height, by SRT method of 0.3m each layer, 5 layers)	3d	21-Oct-17 A	23-Oct-17 A										
A1930	Dismantle 1.5m high metal barrier	2d	24-Oct-17 A	25-Oct-17 A										
A1940	Break two concrete footings for temp traffic deck	2d	30-Oct-17 A	07-Nov-17										
Drainage Works		4d	23-Nov-17	26-Nov-17										
A1960	Backfilling trench and then construct 1 manhole and 2 gullies with DN150mm UPVC gully Pipes	3d	23-Nov-17	25-Nov-17										
A1990	CCTV survey of existing main pippeline (with water jet and within site area)	1d	26-Nov-17	26-Nov-17										
Reinstatement of Existing Gas Main		15d	08-Nov-17	22-Nov-17										
A1970	Excavation for DN400mm Gas main	10d	08-Nov-17	17-Nov-17										
A1980	Laying and connection of DN400mm gas main by HKCG (inside site area)	7d	13-Nov-17	19-Nov-17										
A2000	Removal of extg. 400 diameter PE pipe	3d	20-Nov-17	22-Nov-17										
Reinstatement Works of Carriageway Pavement for Stage 3 TTA		14d	26-Nov-17	10-Dec-17										
A2020	Well compact formation level and subbase by proof rolling method (instead of SRT)	3d	26-Nov-17	28-Nov-17										
A2030	Lay cross road duct for permanent lighting	2d	29-Nov-17	30-Nov-17										
A2040	Reinstate the Road Kerb along TFS (100m)	4d	01-Dec-17	04-Dec-17										

Activity ID	Activity Name	Original Duration	Start	Finish	2017				2018						
					Nov	Dec	Jan	Feb	Nov	Dec	Jan	Feb			
A2050	Lay flexible road pavement (RB, BC)	3d	05-Dec-17	07-Dec-17											
A2060	Expose and Install Manhole Covers	1d	07-Dec-17	07-Dec-17											
A2070	Lay flexible road pavement (PMSMA 10)	1d	08-Dec-17	08-Dec-17											
A2080	Lay road marking and erect permanent traffic signs	1d	08-Dec-17	08-Dec-17											
A2090	Implement next TTM stage 3 (Tsing Fung Street, WB)	1d	10-Dec-17	10-Dec-17											
TTM Stage 3 - Reinstatement of Victoria Park		103d	20-Nov-17	02-Mar-18											
Reinstatement Works in Traffic Deck		24d	10-Dec-17	02-Jan-18											
A2100	Break flexible pavement and concrete slab above WB traffic deck	3d	10-Dec-17	12-Dec-17											
A2110	Dismantle traffic deck and Cut king posts	5d	13-Dec-17	17-Dec-17											
A2120	Break two concrete footings	3d	18-Dec-17	20-Dec-17											
A2130	Backfill Type B Material up to 2m below F.F.L (Compaction by proof rolling method of 0.2m each layer)	3d	21-Dec-17	23-Dec-17											
A2140	Cut pipe piles and sheet pile	5d	24-Dec-17	28-Dec-17											
A2150	Backfill General Fill Material up to Formation Level (Avg. 1.5m height, by SRT method of 0.3m each layer, 5 layers)	3d	29-Dec-17	31-Dec-17											
A2160	Dismantle 1.5m high metal barrier	2d	01-Jan-18	02-Jan-18											
Reinstatement Works inside Victoria Park		103d	20-Nov-17	02-Mar-18											
A2180	Removal of Temporary 400 diameter Gas main	7d	20-Nov-17	26-Nov-17											
A2170	Reinstatement of Boundary Fence	21d	02-Jan-18	25-Jan-18											
A2190	Cutting sheet pile to 1.5m below finish slope profile (MS 169B)	10d	26-Jan-18	06-Feb-18											
A2200	Slope Reinstatement of Victoria Park	21d	03-Feb-18	02-Mar-18											
Completion of Minor Outstanding / Remaining Works for KD9		97d	05-Nov-17	09-Feb-18											
West Bound - Completion of Minor Outstanding / Remaining Works for KD9		97d	05-Nov-17	09-Feb-18											
Minor Reinstatement Works for Tsing Fung Street		13d	26-Jan-18	07-Feb-18											
A2240	Laying Public Lighting duct	6d	26-Jan-18	31-Jan-18											
A2250	Installation of public lighting post and connection by HyD	7d	01-Feb-18	07-Feb-18											
A2260	Well compact road formation level and subbase for SRT	6d	01-Feb-18	06-Feb-18											
Minor Reinstatement Works in IEC West Bound		97d	05-Nov-17	09-Feb-18											
A2300	Replacement of new movement joint at IEC W/B (Sun midnight only)	8d	05-Nov-17	12-Nov-17											
A2330	Repairing of 300 dia. concrete pipeline by lining under slow lane of IEC W/B	2d	05-Nov-17*	06-Nov-17											
A2310	Repairing of extg conc deck surface after milling of temp asphalt at IEC W/B and E/B (Sun midnight only)	59d	13-Nov-17	10-Jan-18											
A2320	Repairing of concrete defects on extg concrete deck and abutment M	30d	11-Jan-18	09-Feb-18											
A2340	Erection of new precast concrete panels (12 nos.) at abutment M facing to VPR	2d	11-Jan-18	12-Jan-18											
A2350	Reinstatement of fire hydrant mounted on external face of edge barrier at IEC W/B	3d	13-Jan-18	15-Jan-18											

Activity ID	Activity Name	Original Duration	Start	Finish	2018												
					Feb	Mar	Apr	May	Jun								
Total		1876d	21-Mar-13 A	21-Jun-18													
DWP-08 - (2) - Update Progress As of 20 Feb 18		1876d	21-Mar-13 A	21-Jun-18													
Works in KD8		24d	05-Feb-18 A	27-Feb-18 A													
TS3W - Remove Temporary Reclamation		24d	05-Feb-18 A	27-Feb-18 A													
Stage 7 - Remove D-wall W4D13, 14 & W4D12, W4D15 - 16 + W3D8 - W3D11 & Seawall Reinstatement		24d	05-Feb-18 A	27-Feb-18 A													
Reinstatement of Remaining Vertical Seawall by Land Plants		24d	05-Feb-18 A	27-Feb-18 A													
MW_1610	Pour concrete behind 5th layer of facing stone	1d	05-Feb-18 A	05-Feb-18 A													
MW_1630	Erect Formwork for coping	3d	06-Feb-18 A	09-Feb-18 A													
MW_1640	Pour concrete for coping	1d	10-Feb-18 A	10-Feb-18 A													
MW_1660	Lay footpath paving blocks	4d	11-Feb-18 A	14-Feb-18 A													
MW_1650	Backfill up to formation level (6 layers)	13d	26-Feb-18 A	27-Feb-18 A													
Works in KD6		132d	30-Aug-17 A	20-Mar-18													
Works in SR8 (Open Cut Method)		132d	30-Aug-17 A	20-Mar-18													
SR8 (Zone C) - Ch. 528 to Ch. 368		74d	30-Aug-17 A	20-Mar-18													
Zone C - Tunnel Structure		74d	30-Aug-17 A	20-Mar-18													
Egress Passage - EP01		74d	30-Aug-17 A	20-Mar-18													
A9050	Steel Railing - Fabrication & Installation	74d	30-Aug-17 A	20-Mar-18													
SR8 (Zone B) - Ch.385.000 to Ch.317.500 - (Inside Victoria Park to Tunnel Portal)		16d	21-Feb-18 A	16-Mar-18													
SR8 (Zone B) Tunnel - ELS / CCT / BF Works (7 Bays Ch. 385.000 to Ch.317.500)		16d	21-Feb-18 A	16-Mar-18													
Portal Structure		16d	21-Feb-18 A	16-Mar-18													
Pump House		7d	21-Feb-18 A	28-Feb-18 A													
Remaining Works inside Pump Sump E		7d	21-Feb-18 A	28-Feb-18 A													
Pump Sump E Hand Rail		7d	21-Feb-18 A	28-Feb-18 A													
EXW_2530	Installation of handrail (agreed with CC contract)	7d	21-Feb-18 A	28-Feb-18 A													
Remaining Works in Zone B		15d	28-Feb-18 A	16-Mar-18													
Egress Passage		15d	28-Feb-18 A	16-Mar-18													
EXW_2550	Railing installation (2 nos. - 10m)	15d	28-Feb-18 A	16-Mar-18													
Works in KD9 (Include Re-provisioning Works of KD4,KD5)		185d	23-Oct-17 A	15-May-18													
External Works Under KD9		185d	25-Oct-17 A	15-May-18													
Zone 1		90d	15-Dec-17 A	27-Mar-18													
Drainage Alignment Confirmation for MH72, 73, 74 due to Tree T1106		90d	15-Dec-17 A	27-Mar-18													
EXW_1125	Drawing Confirmation and construction for MH2-74A and associated drainage	8d	15-Dec-17 A	25-Mar-18													
EXW_1145	Pedestrian walkway open to public during Christmas and CNY	90d	23-Jan-18 A	27-Mar-18													
Zone 2		35d	25-Oct-17 A	04-Apr-18													
EXW_1890	Irrigation system construction	15d	25-Oct-17 A	04-Apr-18													
EXW_1880	Boundary fence Installation	30d	01-Nov-17 A	04-Apr-18													
Zone 3		35d	03-Mar-18	16-Apr-18													
Traffic Island		35d	03-Mar-18	16-Apr-18													
EXW_2050	Directional sign DS17 steel frame	7d	03-Mar-18*	10-Mar-18													
EXW_2060	New VMS6 steel frame	7d	12-Mar-18	19-Mar-18													
EXW_2070	TCSS and lighting at island	7d	20-Mar-18	26-Mar-18													
EXW_2080	JTIS (3 nos. footings, 1 no. concrete plinth)	14d	27-Mar-18	16-Apr-18													
Zone 4 up to Elderly Facilities		90d	30-Jan-18 A	15-May-18													

Activity ID	Activity Name	Original Duration	Start	Finish	2018											
					Feb	Mar	Apr	May	Jun							
Elderly Facilities V/039 Received on 22 Jun 2017																
EXW_2270	Facilities fabrication	90d	30-Jan-18 A	15-May-18	Facilities fabrication											
Additional Walkway & Arbour V/040 Received on 22 Aug 2017																
EXW_2300	Arbour confirmation and fabrication	60d	15-Feb-18 A	16-Mar-18	Arbour confirmation and fabrication											
EXW_2310	Associated drainage works for the walkway	20d	17-Mar-18	12-Apr-18	Associated drainage works for the walkway											
Reverting Traffic for IEC,VP Rd & TF St & Seawall Reinstatement (KD9)																
TTA Revert Traffic Back to Original Alignment																
East Bound TTA - IEC East Bound, Victoria Park Road & footpath along Sea Side																
TTM Stage 1 - IEC (East Bound)																
Reinstatement Existing Structure																
EB_1020	Install metal parapet on parapet wall (30m)	6d	28-Feb-18	05-Mar-18	Install metal parapet on parapet wall (30m)											
TTM Stage 2 - Revert Traffic back to Original Victoria Road																
Existing Bridge Parapet Reinstatement																
EB_1180	Install metal parapet on parapet wall (40m)	4d	06-Mar-18	09-Mar-18	Install metal parapet on parapet wall (40m)											
TTM Stage 3 - Reinstatement of Footpath along Seafront																
Reinstatement Works in Traffic Deck Part A																
EB_1540	Break two concrete footings	2d	31-Jan-18 A	16-Mar-18	Break two concrete footings											
EB_1520	Break pipe piles and cut sheet pile	6d	10-Feb-18 A	26-Feb-18 A	Break pipe piles and cut sheet pile											
EB_1530	Backfill Subbase material up to Formation Level (Avg. 1.5m height, by SRT method of 0.3m each layer, 5 layers)	3d	17-Mar-18	19-Mar-18	Backfill Subbase material up to Formation Level (Avg. 1.5m height, by SRT method of 0.3m each layer, 5 layers)											
Reinstatement of Existing Gas Main																
EB_1560	Excavation for DN400mm Gas main	3d	20-Mar-18	22-Mar-18	Excavation for DN400mm Gas main											
EB_1570	Laying DN400mm gas main by HKCG at VPR footpath	14d	23-Mar-18	05-Apr-18	Laying DN400mm gas main by HKCG at VPR footpath											
West Bound - IEC West Bound & Tsing fung Street																
TTM Stage 2 - Revert Traffic back to Original Tsing Fung Street																
Existing Bridge Parapet Reinstatement																
IECW_1140	Install metal parapet on parapet wall (60m)	5d	28-Feb-18	04-Mar-18	Install metal parapet on parapet wall (60m)											
TTM Stage 3 - Reinstatement of Victoria Park																
Reinstatement Works in Traffic Deck																
IECW_1390	Cut pipe piles and sheet pile	5d	18-Jan-18 A	13-Mar-18	Cut pipe piles and sheet pile											
IECW_1400	Backfill General Fill Material up to Formation Level (Avg. 1.5m height, by SRT method of 0.3m each layer, 5 layers)	3d	14-Mar-18	16-Mar-18	Backfill General Fill Material up to Formation Level (Avg. 1.5m height, by SRT method of 0.3m each layer, 5 layers)											
Reinstatement Works inside Victoria Park																
IECW_1440	Reinstatement of Boundary Fence	21d	29-Jan-18 A	17-Mar-18	Reinstatement of Boundary Fence											
IECW_1460	Cutting sheet pile to 1.5m below finish slope profile (MS 169B)	10d	19-Mar-18	28-Mar-18	Cutting sheet pile to 1.5m below finish slope profile (MS 169B)											
IECW_1470	Slope Reinstatement of Victoria Park	21d	26-Mar-18	23-Apr-18	Slope Reinstatement of Victoria Park											
Completion of Minor Outstanding / Remaining Works for KD9																
West Bound - Completion of Minor Outstanding / Remaining Works for KD9																
Minor Reinstatement Works for Tsing Fung Street																
IECW_1530	Laying Public Lighting duct	6d	18-Mar-18	23-Mar-18	Laying Public Lighting duct											
IECW_1540	Installation of public lighting post and connection by HyD	7d	24-Mar-18	30-Mar-18	Installation of public lighting post and connection by HyD											
IECW_1550	Well compact road formation level and subbase for SRT	6d	24-Mar-18	29-Mar-18	Well compact road formation level and subbase for SRT											
Minor Reinstatement Works in IEC West Bound																
IECW_1600	Replacement of new movement joint at IEC W/B (Sun midnight only)	8d	28-Feb-18	07-Mar-18	Replacement of new movement joint at IEC W/B (Sun midnight only)											
IECW_1630	Repairing of 300 dia. concrete pipeline by lining under slow lane of IEC W/B	2d	28-Feb-18*	01-Mar-18	Repairing of 300 dia. concrete pipeline by lining under slow lane of IEC W/B											
IECW_1610	Repairing of extg conc deck surface after milling of temp asphalt at IEC W/B and E/B (Sun midnight only)	59d	08-Mar-18	05-May-18	Repairing of extg conc deck surface after milling of ten											

Activity ID	Activity Name	Original Duration	Start	Finish	2018					
					Feb	Mar	Apr	May	Jun	
Works in Victoria Park (KD4, KD5, KD9)										
Re-Provisioning Works										
Nursery Compound										
Nursery compound										
ABWF										
Finishes & Waterproofing										
VP_NC_1500	External wall tile cleaning	3d	23-Oct-17 A	20-Mar-18	External wall tile cleaning					
VP_NC_1420	Painting to wall & ceiling in general (final coat)	4d	15-Mar-18*	19-Mar-18	Painting to wall & ceiling in general (final coat)					
Switch room Cut-out Frame & Chequer Plate										
VP_NC_1690	Installation	1d	13-Feb-18 A	14-Feb-18 A	Installation					
Signage										
VP_NC_1720	Installation	7d	21-Feb-18 A	28-Feb-18 A	Installation					
Metal Fence										
VP_NC_1820	Installation	30d	15-Jan-18 A	29-Mar-18	Installation					
E&M										
VP_NC_1890	Form WR1 submission	7d	09-Feb-18 A	13-Feb-18 A	Form WR1 submission					
VP_NC_1900	Expected power on date	7d	14-Feb-18 A	14-Feb-18 A	Expected power on date					
Fire Services										
VP_NC_1960	Pump and water pipe installation	10d	22-Dec-17 A	10-Mar-18	Pump and water pipe installation					
VP_NC_1980	Hose Reel installation, Breakglass and Alarm	3d	10-Feb-18 A	13-Feb-18 A	Hose Reel installation, Breakglass and Alarm					
VP_NC_1930	FS pipe connection from u/g to water meter room	2d	24-Feb-18 A	28-Feb-18 A	FS pipe connection from u/g to water meter room					
Plumbing and Flushing Water Supplies										
VP_NC_2080	Cleaning of potable water pipe and sampling to WSD	7d	17-Feb-18 A	26-Feb-18 A	Cleaning of potable water pipe and sampling to WSD					
VP_NC_2100	WSD Inspection	14d	28-Feb-18	15-Mar-18	WSD Inspection					
GRP Water Tank Installation										
VP_NC_2130	Final As-fitted drawing submission to WSD	7d	30-Jan-18 A	06-Feb-18 A	Final drawing submission to WSD					
External Works Aside Nursery Compound										
Drainage										
VP_NC_2150	U channel at toilet	2d	30-Jan-18 A	31-Jan-18 A	U channel					
VP_NC_2190	SS angle to shower room u channel	1d	31-Jan-18 A	31-Jan-18 A	SS angle to shower room u channel					
VP_NC_2140	Drainage work at External area	15d	28-Feb-18	16-Mar-18	Drainage work at External area					
Water Works										
VP_NC_2220	FS Fresh & Salt Water, Fresh Water and Irrigation System	15d	07-Feb-18 A	27-Feb-18 A	FS Fresh & Salt Water, Fresh Water and Irrigation System					
External Works Around Nursery Compound										
VP_NC_2250	Reinstatement of Existing Boundary Fence Wall Around Nursery Compound	45d	28-Feb-18	24-Apr-18	Reinstatement of Existing Boundary Fence Wall Around Nursery Compound					
KD10 - Preservation and Protection of Trees										
PPT_0000	Preservation and Protection of Existing Trees	1088d	21-Mar-13 A	21-Jun-18	Preservation and Protection of Existing Trees					
KD15 & KD8 - Mooring Components Upkeep (CBTS and ATS)										
MAR_3020	Mooring Upkeep at Portion X(10) & XVI(16) - CBTS	979d	15-May-14 A	28-Feb-18	Mooring Upkeep at Portion X(10) & XVI(16) - CBTS					